



Regent RDLT

Series Lawn Tractors & Mower Decks

Attachment

| Mfg. No. | Description |
|------------|---|
| 2691263-00 | 2691263-00 - SRD100, 4195 Rear Discharge Lawn Tractor and 96cm Mower Deck (CE/Export) |
| 2691264-00 | 2691264-00 - SRD200, 7220 Rear Discharge Lawn Tractor and 96cm Mower Deck (CE/Export) |
| 2691265-00 | 2691265-00 - SRD300, 8270 Rear Discharge Lawn Tractor and 107 cm Mower Deck (CE/Export) |

Not for
Reproduction

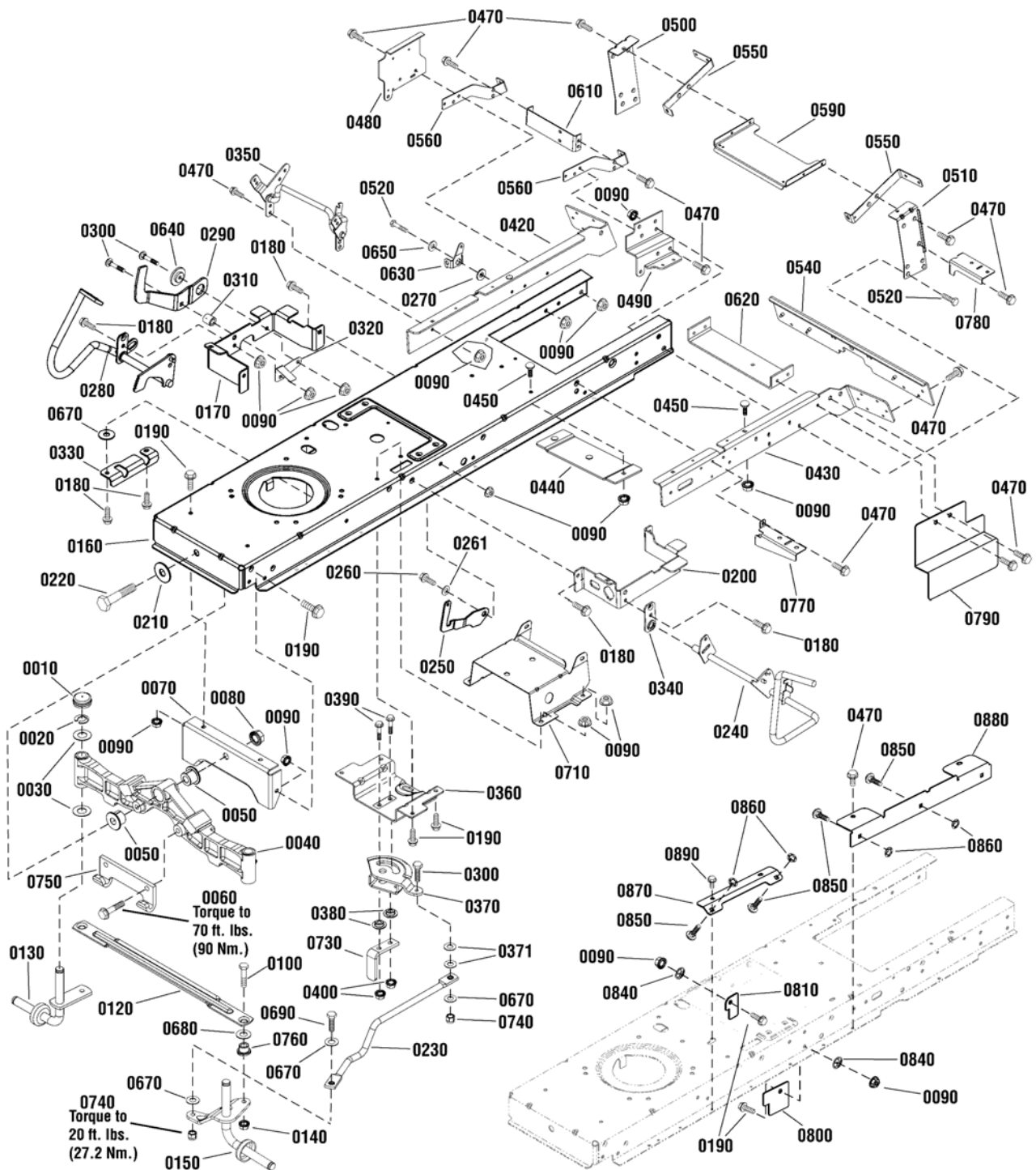
| PRODUCT COMPONENTS | PAGES |
|--|--------------------------|
| Frame & Front Axle Group | 4 |
| Steering Group | 8 |
| Engine Group | 10 |
| Transmission Group - Hydro Gear | 12 |
| Transmission SERVICE PARTS - Hydro Gear 324-0610 | 14 |
| Controls Group | 20 |
| Electrical Group | 22 |
| Hood, Grille & Dash Group | 26 |
| Hood, Grille & Dash Group | 28 |
| Seat Deck & Fuel Tank Group | 30 |
| Seat Deck & Fuel Tank Group | 32 |
| Mulch Plug Group | 34 |
| Lift Group | 36 |
| Wheel & Tire Group | 38 |
| Wheel & Tire Group | 40 |
| Decals Group | 42 |
| Backplate Group | 44 |
| Bystander Group | 46 |
| Collector Group | 48 |
| 107cm Mower Deck - Housing & Blades Group | 50 |
| 96cm Mower Deck - Clutch Group | 54 |
| 96cm Mower Deck - Housing & Blades Group | 56 |
| 96cm Mower Deck - Support Group | 58 |
| Torque Specification Chart | Inside Back Cover |

Not for
Reproduction

Frame & Front Axle Group

2991811

NOTE: Unless noted otherwise,
use the standard hardware torque
specification chart.



The above parts group applies to the following Mfg. Nos.:

2691263-00 - SRD100

2691264-00 - SRD200

2691265-00 - SRD300

Frame & Front Axle Group

| REF NO | PART NO. | QTY. | DESCRIPTION |
|--------|------------|------|--|
| 0010 | 1734135SM | 2 | CAP, Hub |
| 0020 | 1611710SM | 2 | RING, Klip |
| 0030 | 2860183SM | 4 | WASHER, 3/4 |
| 0040 | 1756386YP | 1 | AXLE ASSEMBLY |
| 0050 | 1730186SM | 2 | BUSHING, Axle |
| 0060 | 1960652SM | 2 | SCREW, 7/16-14 X 1 1/2 |
| 0070 | 1727902SM | 1 | PLATE, Axle Suport |
| 0080 | 2860646SM | 1 | NUT, Hex Flange, 5/8-11 |
| 0090 | 690272MA | 28 | NUT, Flange, 5/16-18, GR5 |
| 0100 | 1960032SM | 2 | SCREW, Hex Head, 3/8-16 X 1 1/4, G5 |
| 0120 | 1751964YP | 1 | TIE ROD |
| 0130 | 1727872ASM | 1 | WHEEL SPINDLE, RH |
| 0140 | 401026MA | 2 | NUT, Flange, 3/8-16 |
| 0150 | 1751922YP | 1 | ARM STEERING, LH |
| 0160 | 1758743 | 1 | FRAME (Not a serviceable part) |
| 0170 | 1727904SM | 1 | SUPPORT, Footrest, RH |
| 0180 | 703949 | 8 | SCREW, Washer, 5/16-18 X 5/8 |
| 0190 | 703354 | 10 | SCREW, Whiz Lock, 5/16-18 x 3/4, GR5 |
| 0200 | 885536AYP | 1 | SUPPORT, Footrest, LH |
| 0210 | 1960035SM | 1 | WASHER-0.625(0.64IDX1.75ODX.11THK) BLK |
| 0220 | 2860744SM | 1 | CAPSCREW, Hex Head, 5/8-11 X 3 1/4, G5 |
| 0230 | 1738051YP | 1 | DRAG LINK |
| 0240 | 1755925YP | 1 | PEDAL ASSEMBLY |
| 0250 | 1735595YP | 1 | LATCH, Brake |
| 0260 | 703851 | 1 | BOLT, Shoulder, 5/16-18 X 1 5/32, GR 5 |
| 0261 | 7014296YP | 1 | WASHER, 1/2 |
| 0270 | 1727935SM | 1 | SPACER, Pivot |
| 0280 | 1736714AYP | 1 | PEDAL, Forward |
| 0290 | 1727246SM | 1 | PEDAL, Reverse |
| 0300 | 703446 | 2 | BOLT, Carriage, 5/16-18 X 1 1/4, GR5 |
| 0310 | 1728024SM | 1 | SPACER |
| 0320 | 1728025SM | 1 | ACTUATOR, Switch |
| 0330 | 885591AYP | 1 | PIVOT, Pedal |
| 0340 | 1727911ASM | 1 | PLATE, Bearing |
| 0350 | 1758772YP | 1 | ARM, LIFT |
| 0360 | 1727940SM | 1 | SUPPORT, Sector |
| 0370 | 1751110YP | 1 | GEAR, Steering |
| 0371 | 703298 | 2 | WASHER, 5/16, GR5 |
| 0380 | 1728122SM | 2 | SPACER, Sector |
| 0390 | 1960032SM | 2 | SCREW, Hex Head, 3/8-16 X 1 1/4, G5 |
| 0400 | 401026MA | 2 | NUT, Flange, 3/8-16 |
| 0420 | 1758741YP | 1 | BRACKET, Rear Frame, RH |
| 0430 | 1758740YP | 1 | BRACKET, Rear Frame, LH |
| 0440 | 885532AYP | 1 | BRACE, Middle Cross |

Footnotes

The above parts group applies to the following Mfg. Nos.:

2691263-00 - SRD100

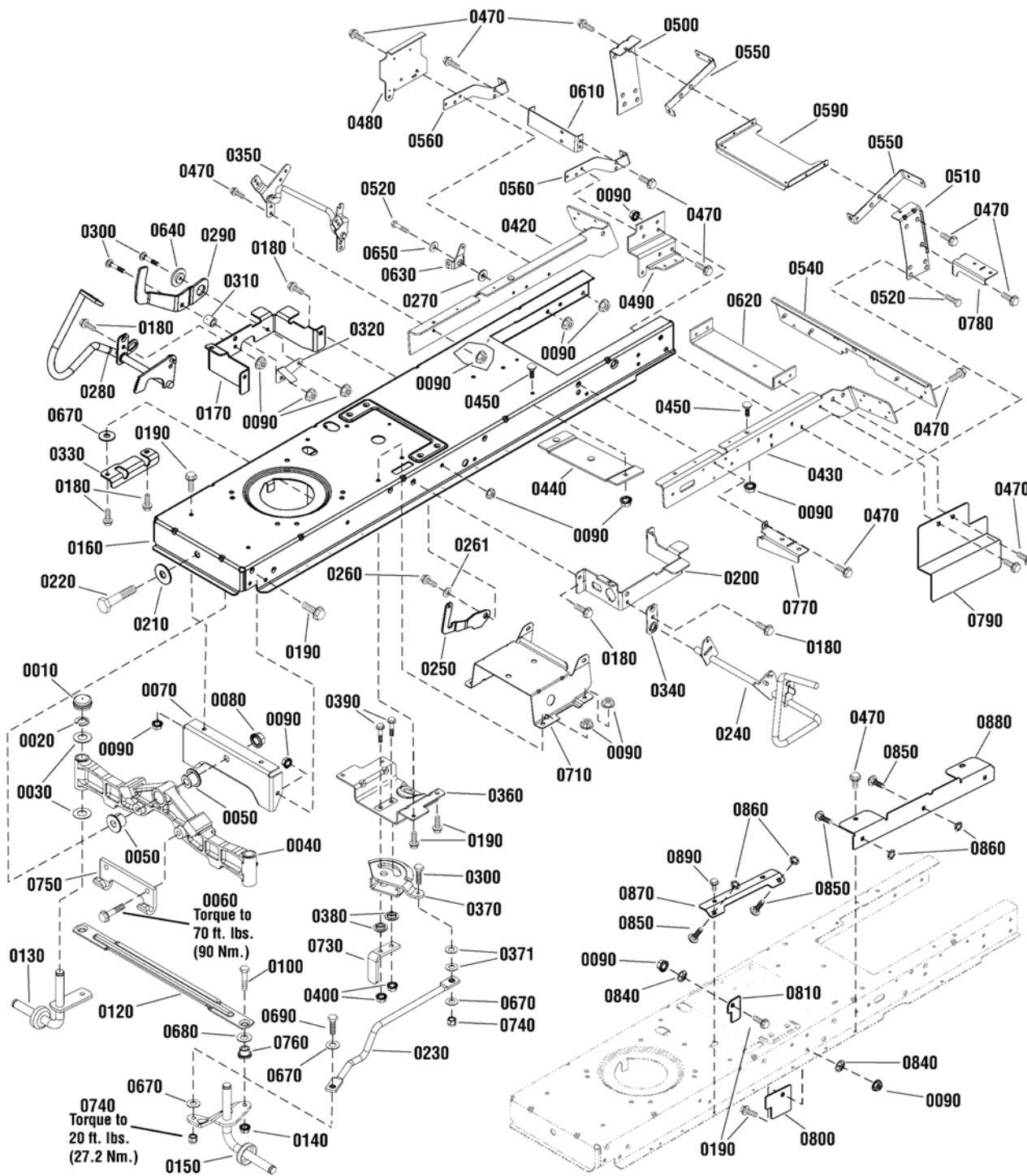
2691264-00 - SRD200

2691265-00 - SRD300

Frame & Front Axle Group

2991811

NOTE: Unless noted otherwise,
use the standard hardware torque
specification chart.



The above parts group applies to the following Mfg. Nos.:

- 2691263-00 - SRD100
- 2691264-00 - SRD200
- 2691265-00 - SRD300

Frame & Front Axle Group

| REF NO | PART NO. | QTY. | DESCRIPTION |
|--------|-------------|------|---|
| 0450 | 703185 | 5 | BOLT, Carriage, 5/16-18 X 3/4, GR5 |
| 0470 | 703228 | 32 | SCREW, Washer, 5/16-18 X 3/4 |
| 0480 | 885474AYP | 1 | BRACKET, Transaxle, Right |
| 0490 | 885475AYP | 1 | BRACKET, Transaxle, Left |
| 0500 | 885411AYP | 1 | SUPPORT, Deck, RH |
| 0510 | 885412AYP | 1 | SUPPORT, Deck, LH |
| 0520 | 1659965SM | 9 | CAPSCREW, Hex Head, 5/16-18 X 1, GR5 |
| 0540 | 885469AYP | 1 | BACK PLATE, Middle |
| 0550 | 1758921YP | 2 | Back Plate, Upper Support |
| 0560 | 885467AYP | 2 | SUPPORT, Lower |
| 0590 | 885503AYP | 1 | BRACE, Deck Support |
| 0610 | 885890AYP | 1 | BRACKET, Torque |
| 0620 | 885486AYP | 1 | BRACKET, Mount Idler |
| 0630 | 1728990SM | 1 | CLEVIS, Lift |
| 0640 | 1727935SM | 1 | SPACER, Pivot |
| 0650 | 1960044SM | 1 | WASHER, 5/16 |
| 0670 | 1660731SM | 5 | WASHER, Flat |
| 0680 | 1960703SM | 2 | WASHER, 5/8 |
| 0690 | 703570 | 2 | CAPSCREW, He xHead, 5/16-18 X 1 1/4,GR5 |
| 0710 | 1727282SM | 1 | SUPPORT, Battery |
| 0730 | 885791AYP | 1 | UPSTOP, Bracket |
| 0740 | 704067 | 2 | NUT, Hex Flange, 5/16-18 |
| 0750 | 1721918ASM | 1 | HOOK, Hitch |
| 0760 | 1731912SM | 2 | BUSHING |
| 0770 | 1758692YP | 1 | BRACKET, Fuel Tank, Front |
| 0780 | 1758691YP | 1 | BRACKET, Fuel Tank, Rear |
| 0790 | 885892YP | 2 | GUARD, Rear |
| 0800 | 1759002BMYP | 1 | GUARD, Stack Pulley, LH |
| 0810 | 1759003BMYP | 1 | GUARD, Stack Pulley, RH |
| 0840 | 703297 | 2 | PUSHNUT, 5/16 |
| 0850 | 703101 | 8 | BOLT, Carriage, 1/4-20 x 3/4 |
| 0860 | 703826 | 8 | PUSHNUT, 1/4 |
| 0870 | 1758978BMYP | 2 | BRACKET, Guard |
| 0880 | 1758974BMYP | 2 | GUARD, Middle |
| 0890 | 704130 | 4 | SCREW, Hex Head, Taptite, 1/4-20 x 1/2 |

Footnotes

The above parts group applies to the following Mfg. Nos.:

2691263-00 - SRD100

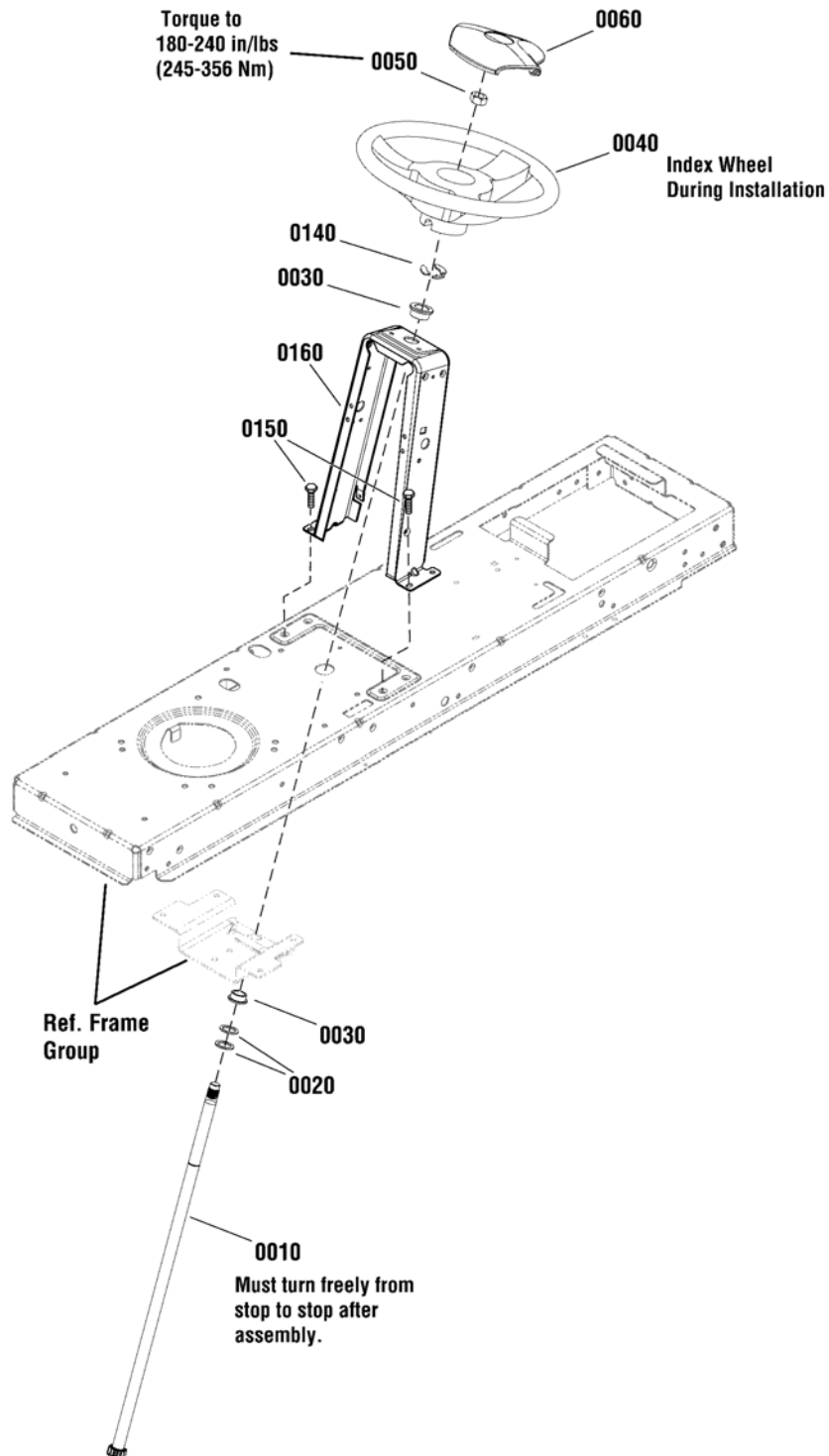
2691264-00 - SRD200

2691265-00 - SRD300

Steering Group

2989455

NOTE: Unless noted otherwise,
use the standard hardware torque
specification chart.



The above parts group applies to the following Mfg. Nos.:

2691263-00 - SRD100

2691264-00 - SRD200

2691265-00 - SRD300

Steering Group

| REF NO | PART NO. | QTY. | DESCRIPTION |
|--------|------------|------|--|
| 0010 | 1727813SM | 1 | SHAFT, Steering Gear & Spline Yellow |
| 0020 | 1924366SM | 2 | WASHER, 5/8 x 1-1/8 |
| 0030 | 1729665SM | 2 | BUSHING, Steering |
| 0040 | 1728069SM | 1 | STEERING WHEEL, w/Aluminum Insert |
| 0040 | 7078088YP | 1 | STEERING WHEEL, Over-molded |
| 0050 | 1960576SM | 1 | NUT, Hex Lock, ESNA Light, 5/8-18 |
| 0060 | 1722319SM | 1 | CAP, Steering Wheel (Decal Not Included) |
| 0140 | 1611710SM | 1 | RING, Klipring Extension |
| 0150 | 1930601SM | 4 | SCREW, Hex Washer Head, Taptite |
| 0160 | 1727260ASM | 1 | TOWER |

Not for
Reproduction

Footnotes

The above parts group applies to the following Mfg. Nos.:

2691263-00 - SRD100

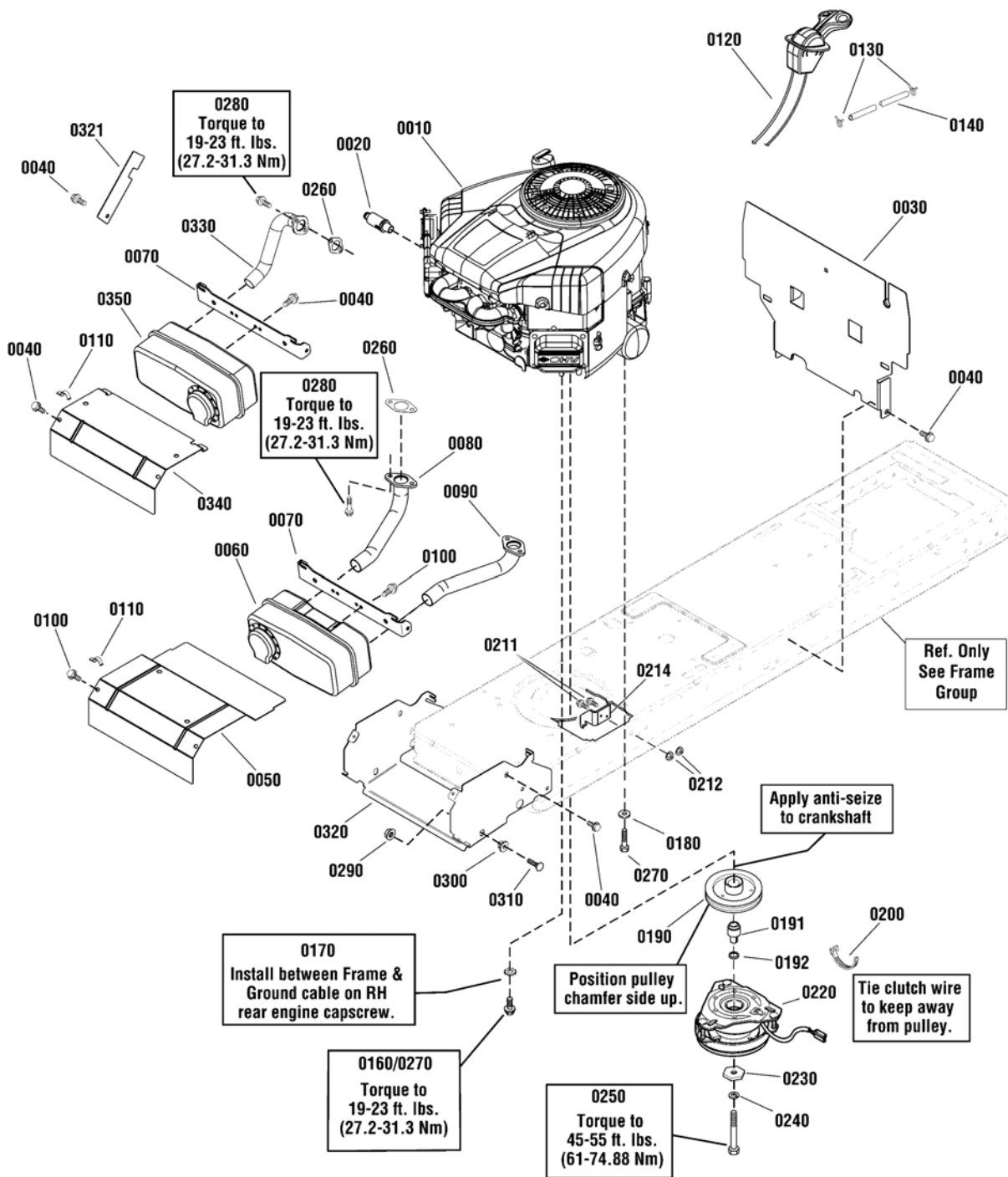
2691264-00 - SRD200

2691265-00 - SRD300

Engine Group

NOTE: Unless noted otherwise, use the standard hardware torque specification chart.

2991769



The above parts group applies to the following Mfg. Nos.:

2691263-00 - SRD100

2691265-00 - SRD300

Engine Group

| REF NO | PART NO. | QTY. | DESCRIPTION |
|--------|----------------|------|--|
| 0010 | 31R977-0039-B1 | 1 | * ENGINE, Briggs & Stratton 4195 Series Intek, Single (Engine Model: 31R977-0039-B1) |
| 0010 | 40R877-0025-B1 | 1 | * ENGINE, Briggs & Stratton 7220 Intek, Twin Series (Engine Model: 40R877-0025-B1) |
| 0010 | 44S877-0039-B1 | 1 | * ENGINE, Briggs & Stratton 8270 Twin Series (Engine Model: 44S877-0039-B1) |
| 0020 | 1750159YP | 1 | VALVE, Shut Off Oil Drain |
| 0030 | 1738380AYP | 1 | HEAT SHIELD |
| 0040 | 703949 | 14 | SCREW, Hex Washer Head, Taptite, 5/16-18 x 5/8 (Qty 8 used on Twin) |
| 0050 | 1727997ASM | 1 | HEAT SHIELD, Twin |
| 0060 | 885954YP | 1 | MUFFLER, Twin |
| 0070 | 1727982ASM | 1 | SUPPORT, Muffler (Single) |
| 0070 | 1727976BMYP | 1 | SUPPORT, Muffler (Twin) |
| 0080 | 1727979SM | 1 | EXHAUST PIPE, RH (Twin) |
| 0090 | 1727980SM | 1 | EXHAUST PIPE, LH (Twin) |
| 0100 | 704130 | 2 | SCREW, Hex Washer Head, Taptite, 1/4-20 x 1/2 (Qty 4 used on Twin) |
| 0110 | 2172434SM | 1 | WIRE CLIP |
| 0120 | 1751734YP | 1 | THROTTLE CONTROL, Choke-A-Matic (Single) |
| 0120 | 1736868YP | 1 | THROTTLE CONTROL, Choke-A-Matic (Twin) |
| 0130 | 791850 | 2 | CLAMP, Hose |
| 0140 | 845503 | 1 | HOSE, Fuel |
| 0160 | 2827187SM | 2 | SCREW, Taptite, 3/8-16 x 1 (Twin) |
| 0170 | 703864 | 1 | WASHER, 3/8 External (Twin) |
| 0180 | 703864 | 1 | WASHER, External Tooth, 3/8 (Single) |
| 0190 | 1732576SM | 1 | PULLEY & HUB ASSEMBLY, Engine |
| 0191 | 885679YP | 1 | SPACER, Electric Clutch |
| 0192 | 885810YP | 1 | SPACER, Electric Clutch |
| 0200 | 1701011SM | 3 | TIE, Self Locking |
| 0211 | 704287 | 2 | SCREW, Hex Washer Head, Taptite, 5/16-18 x 3/4 |
| 0212 | 703409 | 2 | NUT, Flange, 5/16-18 |
| 0214 | 885535AYP | 1 | BRACKET, Electric Clutch Torque |
| 0220 | 885680YP | 1 | CLUTCH, Electric, GT1A-EH07 |
| 0230 | 1708264SM | 1 | WASHER, 7/16 |
| 0240 | 704007 | 1 | LOCKWASHER, Split, 7/16 |
| 0250 | 7102075YP | 1 | CAPSCREW, Hex Head, 7/16-20 x 5 |
| 0260 | 1731214SM | 1 | GASKET, Exhaust (Qty 2 used on Twin) |
| 0270 | 2827187SM | 4 | SCREW, Hex Washer, Taptite, 3/8-16 x 1 (Single) |
| 0280 | 690341 | 2 | ** SCREW, Hex SEMS Lock Washer 5/16-18 x 7/8 (Qty 4 used on Twin) |
| 0290 | 703409 | 2 | NUT, Hex Flange, Whiz Lock, 5/16-18 |
| 0300 | 1728086SM | 2 | PIVOT, Hood |
| 0310 | 703800 | 2 | BOLT, Carriage, 5/16-18 x 1 |
| 0320 | 1738265AYP | 1 | BRACKET, Muffler |
| 0321 | 1736025BMYP | 1 | GUARD, Pulley (Single) |
| 0330 | 1728959SM | 1 | EXHAUST PIPE, Single |
| 0340 | 1727996ASM | 1 | HEAT SHIELD, Single |
| 0350 | 885615YP | 1 | MUFFLER, Single |

Footnotes

The above parts group applies to the following Mfg. Nos.:

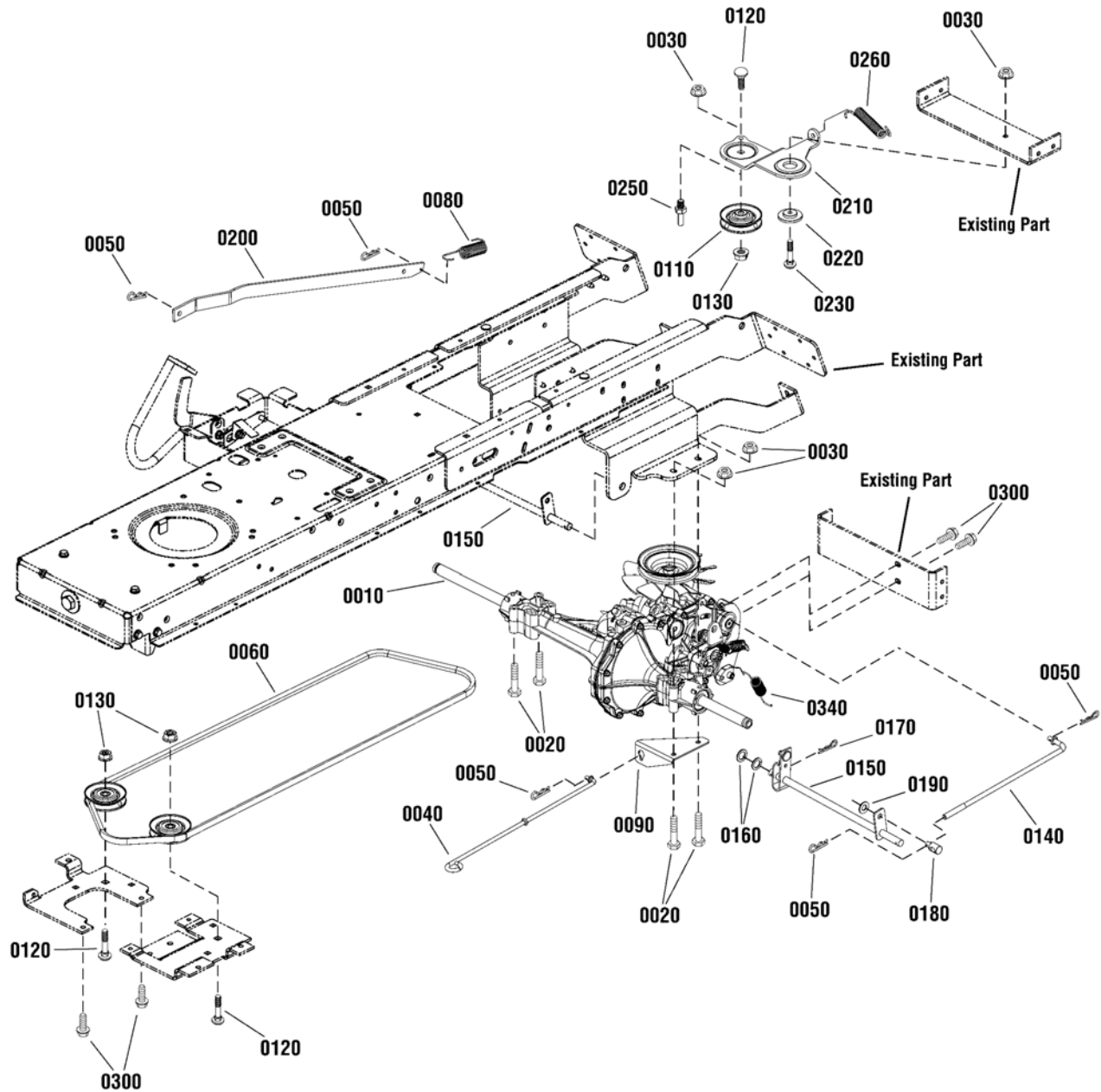
2691263-00 - SRD100

2691265-00 - SRD300

Transmission Group - Hydro Gear

2991379

NOTE: Unless noted otherwise,
use the standard hardware torque
specification chart.



The above parts group applies to the following Mfg. Nos.:

2691263-00 - SRD100

2691264-00 - SRD200

2691265-00 - SRD300

Transmission Group - Hydro Gear

| REF NO | PART NO. | QTY. | DESCRIPTION |
|--------|------------|------|---|
| 0010 | 885528YP | 1 | * TRANSMISSION, Hydro Gear, 610 |
| 0020 | 1923141SM | 4 | SCREW, Hex Head Flange Lock, 5/16-18 x 2-3/4, G5 |
| 0030 | 1931277SM | 4 | NUT, Hex Flange, Whiz Lock, 5/16-18 |
| 0040 | 885436YP | 1 | LEVER, Roll Release |
| 0050 | 1722460SM | 5 | PIN, Quick |
| 0060 | 885495YP | 1 | BELT, Secondary |
| 0080 | 165X75MA | 1 | SPRING, Extension |
| 0090 | 885868BMYP | 1 | BRACKET, Roll Release |
| 0110 | 885645YP | 3 | PULLEY, Idler |
| 0120 | 1931352SM | 3 | BOLT, Carriage, Short Neck, 3/8-16 x 1-1/2, G5 |
| 0130 | 015X84MA | 3 | NUT, Hex Flange, Centerlock, 3/8-16 |
| 0140 | 885476YP | 1 | SPEED CONTROL, Short Link |
| 0150 | 885477AYP | 1 | SPEED CONTROL ASSEMBLY |
| 0160 | 017X91MA | 2 | WASHER, Flat, 13/16 |
| 0170 | 1960074SM | 1 | PIN, Cotter |
| 0180 | 021920ZMA | 1 | NUT, Adjusting |
| 0190 | 017X53MA | 1 | WASHER, Flat |
| 0200 | 885480AYP | 1 | LINK, Speed Control |
| 0210 | 885409AYP | 1 | BRACKET, Idler, Rear |
| 0220 | 1727935SM | 1 | SPACER, Pivot |
| 0230 | 1931335SM | 1 | BOLT, Carriage, Short Neck, 5/16-18 x 1, G5 |
| 0250 | 885077YP | 1 | BELT GUIDE |
| 0260 | 1731939SM | 1 | SPRING, Extension |
| 0300 | 703228 | 4 | CAPSCREW, Hex Washer Head, Taptite, 5/16-18 x 3/4 (Only 2 used on Rev - 01) |
| 0340 | 165X92MA | 1 | SPRING, Extension |

Footnotes

Note:* See your local authorized dealership for parts and warranty or contact Hydro Gear at www.hydro-gear.com/Support/NorthAmerica.aspx (U.S. 1-877-728-7410 Int'l 32 (0) 12 670 631)

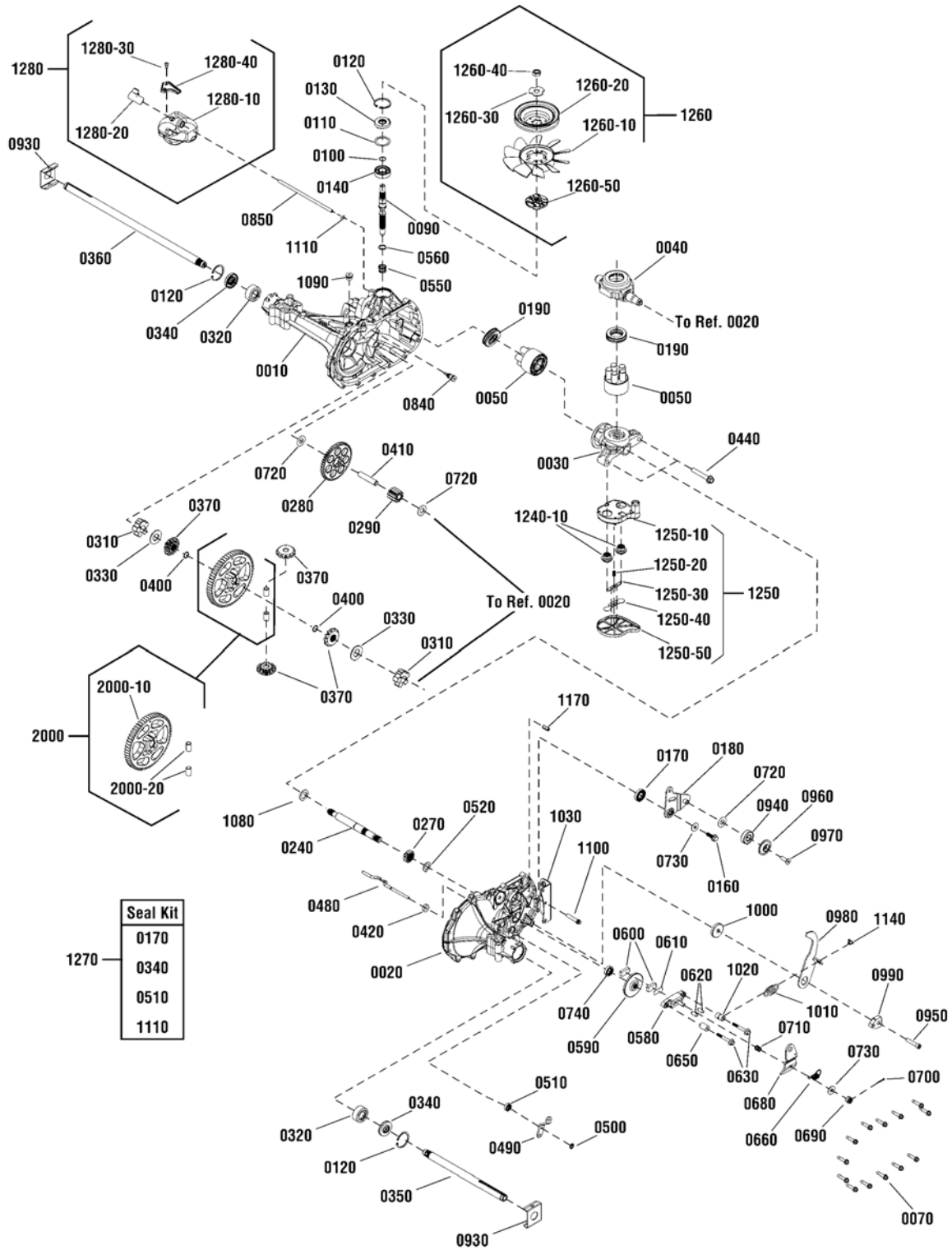
The above parts group applies to the following Mfg. Nos.:

2691263-00 - SRD100
2691264-00 - SRD200
2691265-00 - SRD300

Transmission SERVICE PARTS - Hydro Gear 324-0610

885528

NOTE: Unless noted otherwise,
use the standard hardware torque
specification chart.



The above parts group applies to the following Mfg. Nos.:

2691263-00 - SRD100

2691264-00 - SRD200

2691265-00 - SRD300

Transmission SERVICE PARTS - Hydro Gear 324-0610

| REF NO | PART NO. | QTY. | DESCRIPTION |
|--------|----------|------|---|
| 0010 | ---- | 1 | * MAIN HOUSING ASSEMBLY |
| 0020 | ---- | 1 | * SIDE HOUSING ASSEMBLY |
| 0030 | ---- | 1 | * CENTERSECTION ASSEMBLY |
| 0040 | ---- | 1 | * TRUNNION, Swashplate |
| 0050 | ---- | 2 | * BLOCK ASSEMBLY |
| 0060 | ---- | 1 | * SEALANT, 10.1 oz. (Not Illustrated) |
| 0070 | ---- | 14 | * SCREW, Hex Washer, 1/4-20 x 1-1/8 |
| 0090 | 1752461 | 1 | SHAFT, Input |
| 0100 | 1715270 | 1 | RING, Retaining |
| 0110 | 1752462 | 1 | WASHER, Flat, 1.23 x 1.57 x .04 |
| 0120 | 1752463 | 3 | RING, RETAINING |
| 0130 | 1752464 | 1 | SEAL, LIP 17 x 40 x 12 |
| 0140 | 1752465 | 1 | BEARING, BALL 17 x 40 x 12 |
| 0160 | ---- | 1 | * SCREW, Hex Flange, With Patch, 5/16-24 x 15/16 |
| 0170 | ---- | 1 | * SEAL, Lip, 18 x 32 x 7 (Not a servicable part, order kit # 1270) |
| 0180 | ---- | 1 | * ARM, Control |
| 0190 | 1715144 | 2 | * BEARING, Thrust, 30 x 52 x 13 |
| 0240 | ---- | 1 | * SHAFT, Motor |
| 0270 | ---- | 1 | * GEAR, Pinion, 12T |
| 0280 | ---- | 1 | * GEAR, 10T/49T |
| 0290 | ---- | 1 | * GEAR, Jackshaft, 10T |
| 0310 | ---- | 2 | * BUSHING, Sleeve (Inboard) |
| 0320 | ---- | 2 | * BUSHING, Sleeve, 3/4 x 1-1.571 x 5/8 |
| 0330 | ---- | 2 | * WASHER, Flat, 3/4 x 1-1/2 x 7/64 |
| 0340 | ---- | 2 | * SEAL, Lip, 3/4 x 1.577 x 1/4 (Not a servicable part, order kit # 1270) |
| 0350 | ---- | 1 | * SHAFT, Axle, 3/4 x 11.39 (Key, RH) |
| 0360 | ---- | 1 | * SHAFT, AXLE, 3/4 x 16.99 (Key, LH) |
| 0370 | ---- | 1 | * KIT, Miter Gear |
| 0400 | ---- | 2 | * RING, Retaining Spiral |
| 0410 | ---- | 1 | * PIN, Jackshaft, 1/2 x 2.43 |
| 0420 | ---- | 1 | * MAGNET, Ring |
| 0440 | 1717965 | 2 | SCREW, Hex Flange, 3/8-24 x 2-1/2 |
| 0480 | ---- | 1 | * ROD, Actuator Bypass |
| 0490 | ---- | 1 | * ARM, Bypass |
| 0500 | ---- | 1 | * RING, Retaining, External, 1/4 |
| 0510 | ---- | 1 | * SEAL, Lip, 1/4 x 3/4 x 1/4 TC (Not a servicable part, order kit # 1270) |
| 0520 | ---- | 1 | * WASHER, Flat, 5/8 x 1 x 1/2 |
| 0530 | ---- | 1 | * RING, Retaining |
| 0540 | ---- | 1 | * BUSHING, Center Block |
| 0550 | ---- | 1 | * SPRING, Block |
| 0560 | ---- | 1 | * WASHER, Thrust, .59 x .79 x .04 |
| 0580 | ---- | 1 | * BRAKE YOKE KIT |
| 0590 | ---- | 1 | * DISK, Brake |
| 0600 | ---- | 2 | * PUCK, Brake |

Footnotes

Note:* See your local authorized dealership for parts and warranty or contact Hydro Gear at www.hydro-gear.com/Support/NorthAmerica.aspx (U.S. 1-877-728-7410 Int'l 32 (0) 12 670 631)

The above parts group applies to the following Mfg. Nos.:

2691263-00 - SRD100
 2691264-00 - SRD200
 2691265-00 - SRD300

Transmission SERVICE PARTS - Hydro Gear 324-0610

| REF NO | PART NO. | QTY. | DESCRIPTION |
|---------|----------|------|--|
| 0610 | ---- | 1 | * PLATE, Puck |
| 0620 | ---- | 2 | * PIN, Brake Actuating |
| 0630 | ---- | 2 | * SCREW, Hex Head, With Patch, 1/4-20 x 2 |
| 0650 | 1715199 | 1 | SPACER, .26 x .57 x .87 |
| 0660 | ---- | 1 | * SPRING, Brake arm Bias |
| 0670 | 1706160 | 1 | SCREW, Square Head, Ribbed, 5/16-24 |
| 0680 | ---- | 1 | * ARM, Brake |
| 0690 | ---- | 1 | * NUT, Castle, 5/16-24 |
| 0700 | ---- | 1 | * PIN, Cotter, 3/32 x 3/4 |
| 0710 | ---- | 1 | * SPRING, Compression Brake, Anti-Drag |
| 0720 | ---- | 3 | * WASHER, Flat, .51 x 1.0 x .03 |
| 0730 | ---- | 2 | * WASHER, Flat, .34 x .88 x .06 |
| 0740 | ---- | 1 | * KIT, Seal |
| 0840 | ---- | 1 | * FITTING, 5/16 SAE 5/32 TUBE |
| 0850 | ---- | 1 | * HOSE, Expansion Tank, 7.56 In. |
| 0930 | 1752466 | 2 | SPRING CLIP, Housing Thrust (3/4" Axle) |
| 0940 | ---- | 1 | * BEARING, Ball, .62 x 1.38 x .44 |
| 0950 | ---- | 1 | * CAPSCREW, Socket Head, 5/16-24 x 1-1/2 |
| 0960 | ---- | 1 | * SPACER, Locating |
| 0970 | ---- | 1 | * SCREW, Countersunk, 5/16-18 x 1 |
| 0980 | ---- | 1 | * ARM, Return |
| 0990 | ---- | 1 | * PUCK, Adjusting |
| 1000 | ---- | 1 | * WASHER, Flat, .32 x 1.60 x .24 |
| 1010 | ---- | 1 | * SPRING, Extension, Double Loop |
| 1020 | ---- | 1 | * SPACER, .26 x .56 x .87 |
| 1030 | ---- | 1 | * BRACKET, Torque |
| 1080 | ---- | 1 | * WASHER, Flat, .71 x 1.16 x .04 |
| 1090 | ---- | 1 | * PLUG, 9/16-18 (METAL) |
| 1100 | ---- | 1 | * SCREW, Torx Head, 5/16-18 x 1-1/2 |
| 1110 | ---- | 1 | * O-RING, .299 x .505 x .103 (Not a serviceable part, order kit # 1270) |
| 1140 | ---- | 1 | * SPRING, Guide |
| 1170 | ---- | 1 | * PIN, Spring, .304 x .75 |
| 1240 | ---- | 1 | * CENTERSECTION ASSEMBLY, Filter, Bypass (Not Illustrated) (Includes Ref. Nos. 0030, 1240-10 & 1250) |
| 1240-10 | ---- | 1 | * CENTERSECTION (5-Piston) (Not a serviceable part, order kit #1240) |
| 1250 | ---- | 1 | * FILTER ASSEMBLY (Includes Ref. Nos. 1250-10, 1250-20, 1250-30, 1250-40 & 1250-50) |
| 1250-10 | ---- | 1 | * BASE, Filter, With Poppet (Not a serviceable part, order kit #1250) |
| 1250-20 | ---- | 1 | * SPRING, Bypass, 1/2" (Not a serviceable part, order kit #1250) |
| 1250-30 | ---- | 1 | * ACTUATOR, Bypass (Not a serviceable part, order kit #1250) |
| 1250-40 | ---- | 1 | * DEFLECTOR (Not a serviceable part, order kit #1250) |
| 1250-50 | ---- | 1 | * BOTTOM, Filter (Not a serviceable part, order kit #1250) |
| 1260 | 1752467 | 1 | FAN & PULLEY KIT (Includes Ref. Nos. 1260-10, 1260-20, 1260-30, 1260-40 & 1260-50) |
| 1260-10 | ---- | 1 | * FAN, 7" (10 BLADE) (Not a serviceable part, order kit #1260) |
| 1260-20 | ---- | 1 | * PULLEY, Cupped, 4-1/2" (Not a serviceable part, order kit #1260) |

Footnotes

Note:* See your local authorized dealership for parts and warranty or contact Hydro Gear at www.hydro-gear.com/Support/NorthAmerica.aspx (U.S. 1-877-728-7410 Int'l 32 (0) 12 670 631)

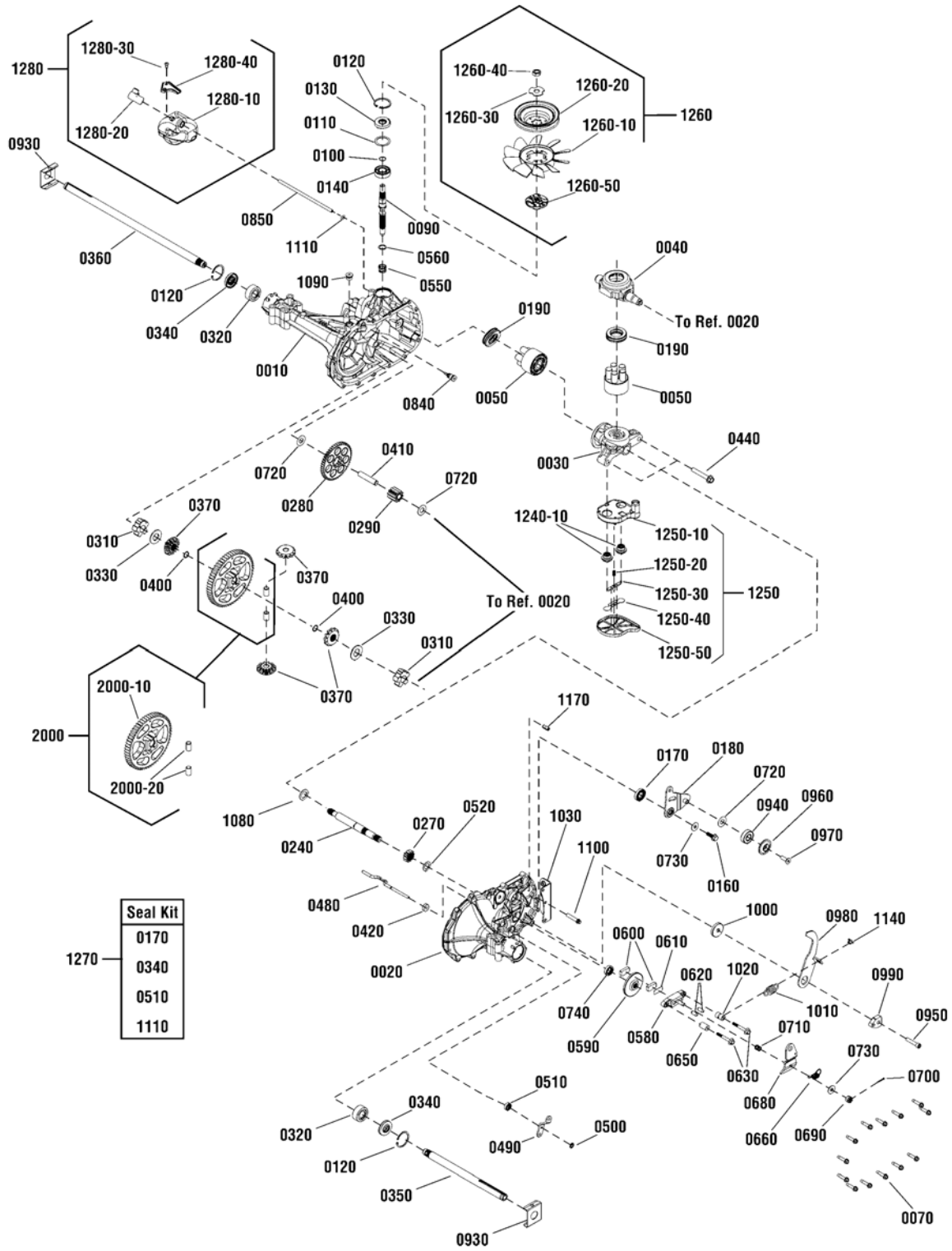
The above parts group applies to the following Mfg. Nos.:

2691263-00 - SRD100
 2691264-00 - SRD200
 2691265-00 - SRD300

Transmission SERVICE PARTS - Hydro Gear 324-0610

885528

NOTE: Unless noted otherwise,
use the standard hardware torque
specification chart.



The above parts group applies to the following Mfg. Nos.:

- 2691263-00 - SRD100
- 2691264-00 - SRD200
- 2691265-00 - SRD300

Transmission SERVICE PARTS - Hydro Gear 324-0610

| REF NO | PART NO. | QTY. | DESCRIPTION |
|---------|----------|------|---|
| 1260-50 | ---- | 1 | * HUB, Pulley (Not a serviceable part, order kit #1260) |
| 1270 | 1752468 | 1 | SEAL & O-RING KIT (Includes Ref. Nos. 0170, 0340, 0510 & 1110) |
| 1280 | 1752469 | 1 | EXPANSION TANK KIT (Includes Ref. Nos. 1280-10, 1280-20, 1280-30 & 1280-40) |
| 1280-10 | ---- | 1 | * TANK, Expansion (Not a serviceable part, order kit #1280) |
| 1280-20 | ---- | 1 | * CAP, Expansion Tank (Not a serviceable part, order kit #1280) |
| 1280-30 | ---- | 1 | * BOLT, Self Tapping, 10-32 x 1/2 (Not a serviceable part, order kit #1280) |
| 1280-40 | ---- | 1 | * BRACKET, Expansion Tank (Not a serviceable part, order kit #1280) |
| 2000 | ---- | 1 | * KIT, 60T Bull Gear Diff Pins (Includes Ref. Nos. 2000-10 & 2000-20) |
| 2000-10 | ---- | 1 | * GEAR, 60T |
| 2000-20 | ---- | 2 | * PIN, 1/2 |

Not for
Reproduction

Footnotes

Note:* See your local authorized dealership for parts and warranty or contact Hydro Gear at www.hydro-gear.com/Support/NorthAmerica.aspx (U.S. 1-877-728-7410 Int'l 32 (0) 12 670 631)

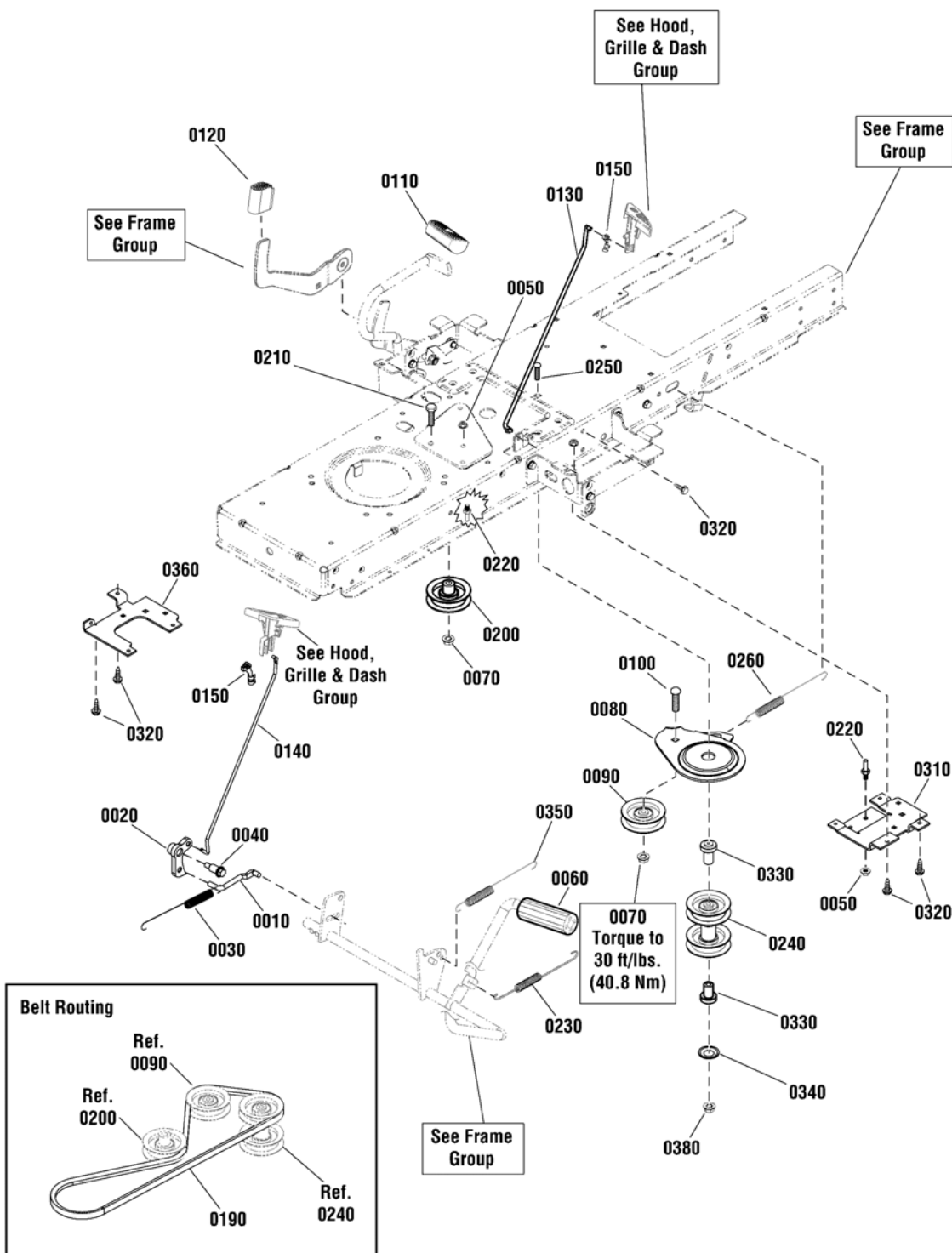
The above parts group applies to the following Mfg. Nos.:

2691263-00 - SRD100
2691264-00 - SRD200
2691265-00 - SRD300

Controls Group

2991770

NOTE: Unless noted otherwise, use the standard hardware torque specification chart.



The above parts group applies to the following Mfg. Nos.:

- 2691263-00 - SRD100
- 2691264-00 - SRD200
- 2691265-00 - SRD300

Controls Group

| REF NO | PART NO. | QTY. | DESCRIPTION |
|--------|------------|------|--|
| 0010 | 1727899SM | 1 | ROD, Cruise Latch, 2.83" |
| 0020 | 1727897SM | 1 | LATCH, Cruise |
| 0030 | 2159181SM | 1 | SPRING, Extension 7-3/4 |
| 0040 | 1728976SM | 1 | BOLT, Shoulder, 5/16-18 x 1-5/8 |
| 0050 | 015X79MA | 3 | NUT, Flange, 5/16-18, G5 |
| 0060 | 1727261SM | 1 | PEDAL, Brake Rubber |
| 0070 | 703158 | 2 | NUT, Hex Flange, ESNA, 3/8-16 |
| 0080 | 885410AYP | 1 | BRACKET, Idler Front Movable |
| 0090 | 885645YP | 1 | PULLEY, 3 OD Plastic |
| 0100 | 703227 | 1 | BOLT, Carriage, 3/8-16 x 1-1/4 |
| 0110 | 1721675SM | 1 | PAD, Foot Pedal, Forward |
| 0120 | 1727259SM | 1 | PAD, Foot Pedal, Reverse |
| 0130 | 1727267SM | 1 | ROD, Parking Brake, 16-3/8" |
| 0140 | 1738760YP | 1 | ROD, Cruise Latch, 17" |
| 0150 | 1728111SM | 2 | CLIP, Linkage, Black |
| 0190 | 885895YP | 1 | BELT, Primary, M/D (47.89" EL, HA Section) |
| 0200 | 885894YP | 1 | IDLER, Backside |
| 0210 | 1921971SM | 1 | CAPSCREW, Hex Head, 3/8-16 x 1-3/4, G5 |
| 0220 | 885534YP | 2 | BELT GUIDE |
| 0230 | 885421YP | 1 | SPRING, Extension |
| 0240 | 885426YP | 1 | PULLEY, Secondary Stack |
| 0250 | 885577YP | 1 | BOLT, Carriage, 3/8-16 x 5 |
| 0260 | 1729620SM | 1 | SPRING, Extension 7-1/2" |
| 0310 | 885684BMYP | 1 | BRACKET, Stack Pulley, Left |
| 0320 | 703228 | 4 | SCREW, Hex Washer Head, Taptite, 5/16-18 x 3/4 |
| 0330 | 885575YP | 2 | SPACER |
| 0340 | 1931942SM | 1 | NUT, Push Pal, 3/8 |
| 0350 | 1721995SM | 1 | SPRING, Extension |
| 0360 | 885685BMYP | 1 | BRACKET, Stack Pulley, Right |
| 0380 | 015X84MA | 1 | NUT, Hex Flange, Centerlock, 3/8-16 |

Footnotes

The above parts group applies to the following Mfg. Nos.:

2691263-00 - SRD100

2691264-00 - SRD200

2691265-00 - SRD300

Electrical Group

| REF NO | PART NO. | QTY. | DESCRIPTION |
|---------|-------------|------|---|
| 0010 | 1758955YP | 1 | WIRING HARNESS |
| 0010-10 | ---- | 1 | * FUSE, 20 Amp |
| 0030 | 703949 | 2 | CAPSCREW, Hex Washer Head, Taptite, 5/16-18 x 5/8 |
| 0040 | ---- | 1 | BATTERY, 7U1L |
| 0043 | 1758779YP | 1 | BUZZER, Bag Full |
| 0044 | 1001845MA | 1 | SWITCH, Bagger |
| 0045 | 885692YP | 1 | HARNESS, Bag Full |
| 0050 | 1730007SM | 1 | HOLD DOWN, Battery |
| 0060 | 1931318SM | 1 | BOLT, Carriage, 1/4-20 x 7/8 |
| 0070 | 703229 | 1 | WASHER, Flat, 1/4 |
| 0080 | 703826 | 1 | BOLT |
| 0090 | 703232 | 1 | NUT, Nylock, 1/4-20 |
| 0100 | 1755381YP | 1 | SOLENOID |
| 0110 | 704130 | 2 | CAPSCREW, Hex Head, 1/4-20 x 1/2 |
| 0135 | 1722611SM | 1 | PLUG, Hole |
| 0180 | 1738982YP | 1 | SWITCH, PTO |
| 0190 | 1726556SM | 1 | SWITCH, Reverse Mow |
| 0210 | 1738983YP | 1 | SWITCH, Light |
| 0230 | 1728026BMYP | 1 | SUPPORT, RMO Switch |
| 0240 | 703185 | 2 | BOLT, Carriage, 5/16-18 x 3/4, GR5 |
| 0250 | 703409 | 2 | NUT, Flange, 5/16-18, GR5 |
| 0260 | 7022886YP | 1 | SWITCH, Push Button (NO/NC) |
| 0280 | 1752685YP | 1 | BATTERY CABLE |
| 0290 | 1751450YP | 1 | CABLE, #8 x 25 |
| 0300 | 1752686YP | 1 | CABLE, #8 x 26.0 |
| 0310 | 704133 | 2 | LOCKWASHER, Split, 1/4 |
| 0320 | 2860750SM | 2 | NUT, Hex Lock, KEPS, 5/16-24 |
| 0330 | 703925 | 2 | CAPSCREW, Hex Head, 1/4-20 x 3/4, GR5 |
| 0340 | 703332 | 2 | WASHER, Flat |
| 0350 | 703127 | 2 | NUT, Hex, 1/4-20, GR5 |
| 0360 | 1677296SM | 1 | BOOT, Insulation |
| 0370 | 703586 | 8 | TIE, Self Lock |
| 0390 | 1732004SM | 1 | SWITCH, Push Button (NO) |
| 0410 | 703233 | 1 | NUT, Flange, Serarated, 1/4-20, GR5 |
| 0420 | 1726557SM | 2 | KEY, No Mow |
| 0430 | 2172434SM | 2 | CLIP, Wire |
| 0620 | 1732007SM | 1 | PLUG, Hole |
| 0630 | 7106169YP | 1 | SWITCH, Ignition |
| 0700 | 703176 | 1 | CLIP, Wire |
| 0710 | 1731185SM | 1 | HOUR METER (Use on 2691263-00) |
| 0710 | 1758654YP | 1 | DISPLAY, Mini Meter (Use where applicable) |
| 0720 | 1758683YP | 1 | GUAGE, Fuel (Use where applicable) |
| 0730 | 7012652YP | 1 | CLIP, Wire, 7/16 |
| 0740 | 1758739YP | 1 | HARNESS, Jumper |

Footnotes

The above parts group applies to the following Mfg. Nos.:

2691263-00 - SRD100

2691264-00 - SRD200

2691265-00 - SRD300

Electrical Group

| REF NO | PART NO. | QTY. | DESCRIPTION |
|---------------|-----------------|-------------|-----------------------------|
| 1100 | 1737837YP | 1 | KEY, Ingition, Blister Pack |

Not for
Reproduction

Footnotes

The above parts group applies to the following Mfg. Nos.:

2691263-00 - SRD100

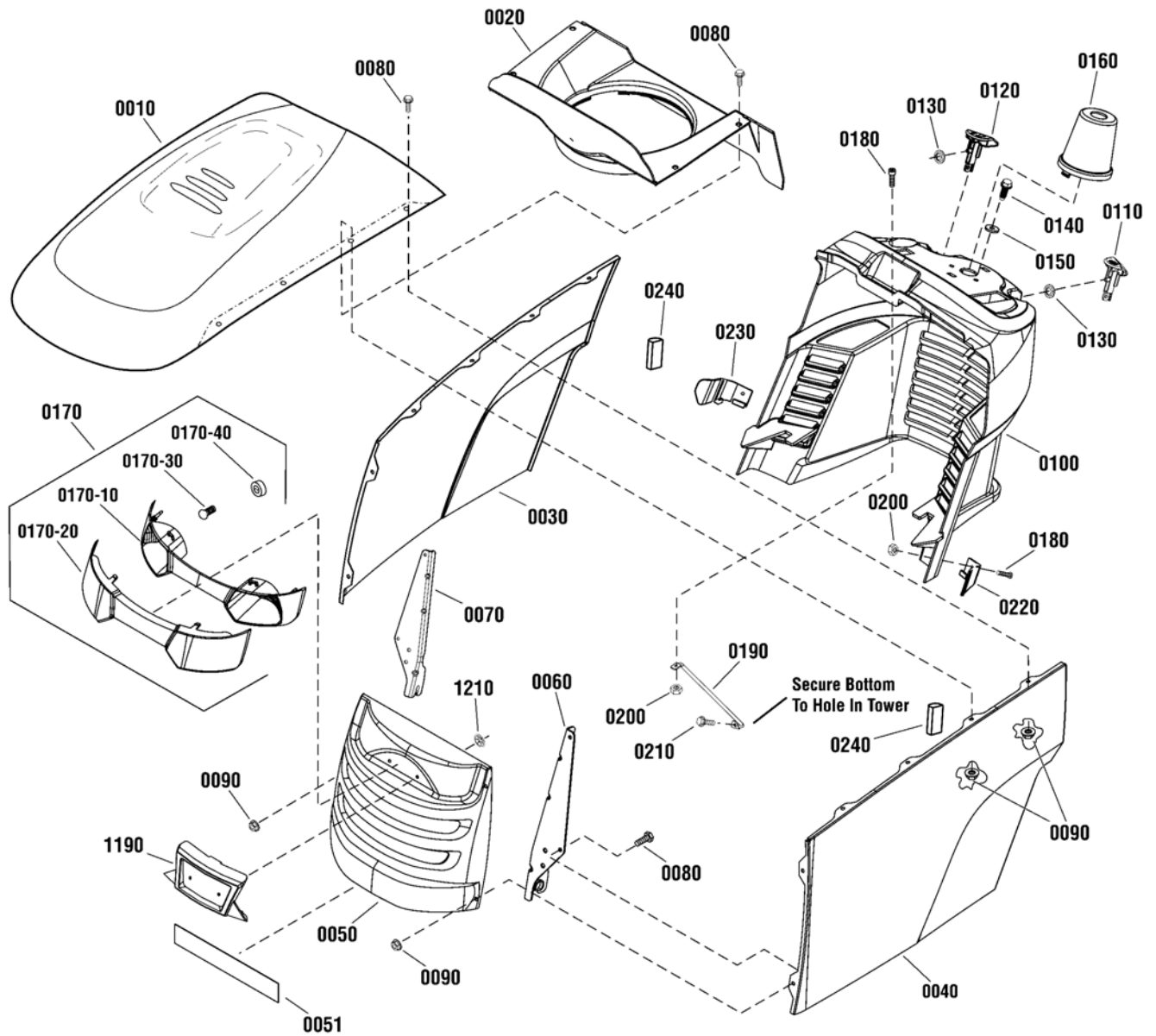
2691264-00 - SRD200

2691265-00 - SRD300

Hood, Grille & Dash Group

2991771

NOTE: Unless noted otherwise,
use the standard hardware torque
specification chart.



The above parts group applies to the following Mfg. Nos.:

2691263-00 - SRD100

Hood, Grille & Dash Group

| REF NO | PART NO. | QTY. | DESCRIPTION |
|---------|-------------|------|---|
| 0010 | 1722110CSM | 1 | HOOD, with Louver |
| 0020 | 7102326YP | 1 | DUCT, Air Inlet Plastic |
| 0030 | 1755497CYP | 1 | PANEL, Hood R.H. |
| 0040 | 1755498CYP | 1 | PANEL, Hood, L.H. |
| 0050 | 1727297CSM | 1 | GRILLE |
| 0051 | 1758731YP | 1 | INSULATION |
| 0060 | 1727279BMYP | 1 | HINGE, Hood L.H. |
| 0070 | 1727280ASM | 1 | HINGE, Hood R.H. |
| 0080 | 1960295SM | 12 | CAPSCREW, Whizlock, 1/4-20 x 5/8 |
| 0090 | 703161 | 12 | NUT, Hex Flange Whiz, 1/4-20 |
| 0100 | 1727293SM | 1 | DASHBOARD |
| 0110 | 1728089SM | 1 | KNOB, Brake Lock Plastic |
| 0120 | 1728090SM | 1 | KNOB, Cruise Lock Green Plastic |
| 0130 | 1960518SM | 2 | NUT, Push Pal |
| 0140 | 703228 | 2 | CAPSCREW, Hex Head, Taptite, 5/16-18 x 3/4 |
| 0150 | 703298 | 2 | WASHER, Plain, 5/16 |
| 0160 | 1727999SM | 1 | COVER, Steering Shaft Plastic |
| 0170 | 1727296SM | 1 | HEADLIGHT ASSEMBLY (Includes Ref. Nos. 0170-10, 0170-20, 0170-30 & 0170-40) |
| 0170-10 | 1728973SM | 1 | REFLECTOR, Headlight |
| 0170-20 | 1728974SM | 1 | LENS, Headlight |
| 0170-30 | 1677371SM | 2 | BULB, 1141-12V 21CP |
| 0170-30 | 1755317YP | 2 | BULB, LED (1156) |
| 0170-40 | 1723451SM | 2 | SOCKET ASSEMBLY |
| 0180 | 1960392SM | 3 | SCREW, Phillips Head |
| 0190 | 1723123SM | 1 | ROD, Dash Support |
| 0200 | 703412 | 3 | NUT, Nylock, #10-24 |
| 0210 | 1925003SM | 1 | SCREW, Self-Tap |
| 0220 | 1732030SM | 1 | GUIDE, Hood L.H. |
| 0230 | 1732031SM | 1 | GUIDE, Hood R.H. |
| 0240 | 1754094YP | 2 | POSITIONER, Hood |
| 1190 | 1755583YP | 1 | INSERT, Headlight |
| 1210 | 1960521SM | 2 | PUSHNUT |

Footnotes

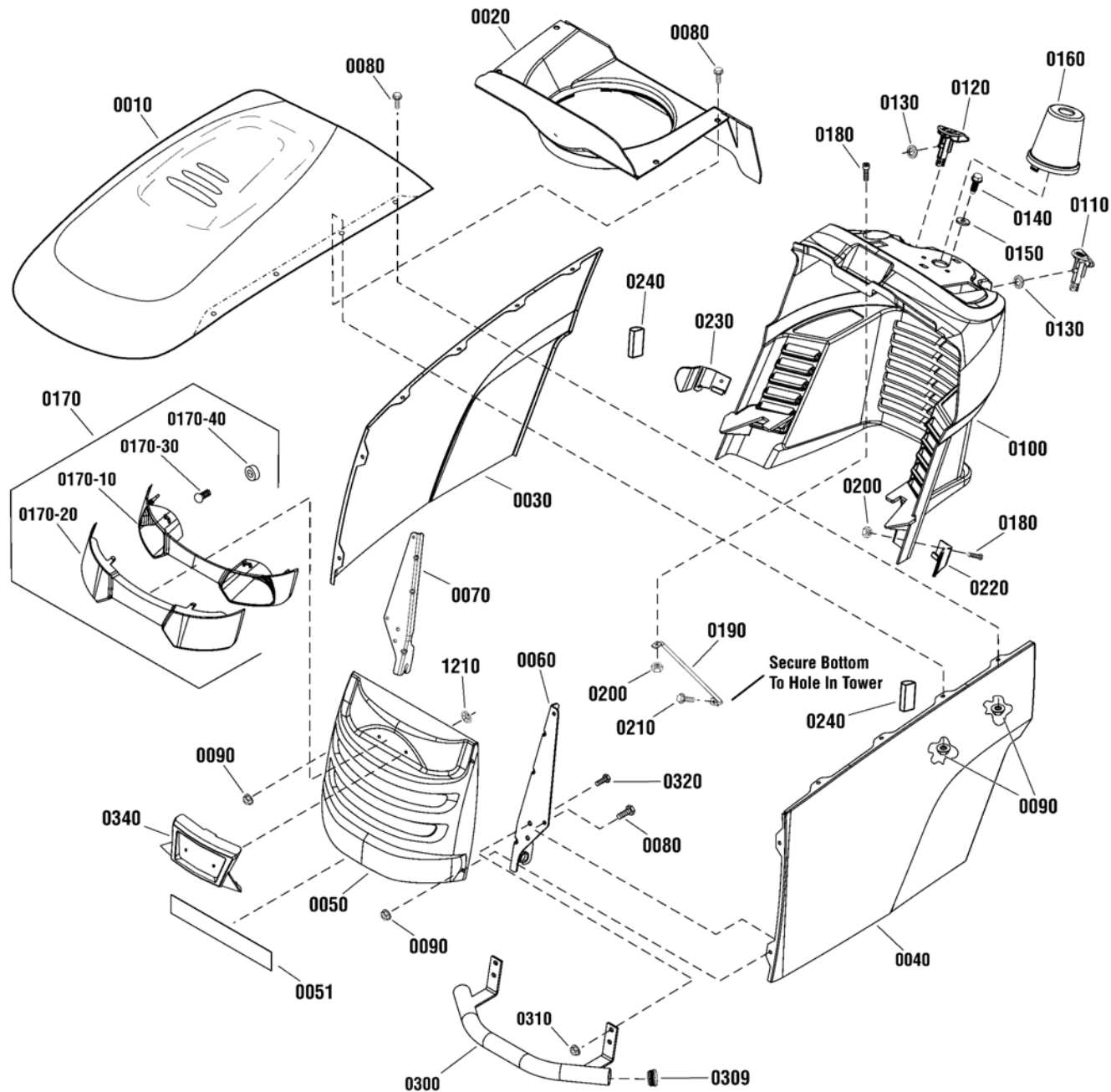
The above parts group applies to the following Mfg. Nos.:

2691263-00 - SRD100

Hood, Grille & Dash Group

2991786

NOTE: Unless noted otherwise,
use the standard hardware torque
specification chart.



The above parts group applies to the following Mfg. Nos.:

2691264-00 - SRD200

2691265-00 - SRD300

Hood, Grille & Dash Group

| REF NO | PART NO. | QTY. | DESCRIPTION |
|---------|-------------|------|---|
| 0010 | 1722110CSM | 1 | HOOD, with Louver |
| 0020 | 7102326YP | 1 | DUCT, Air Inlet Plastic |
| 0030 | 1755497CYP | 1 | PANEL, Hood R.H. |
| 0040 | 1755498CYP | 1 | PANEL, Hood, L.H. |
| 0050 | 1727297CSM | 1 | GRILLE |
| 0051 | 1758731YP | 1 | INSULATION |
| 0060 | 1727279BMYP | 1 | HINGE, Hood L.H. |
| 0070 | 1727280ASM | 1 | HINGE, Hood R.H. |
| 0080 | 1960295SM | 12 | CAPSCREW, Whizlock, 1/4-20 x 5/8 |
| 0090 | 703161 | 12 | NUT, Hex Flange Whiz, 1/4-20 |
| 0100 | 1727293SM | 1 | DASHBOARD |
| 0110 | 1728089SM | 1 | KNOB, Brake Lock Plastic |
| 0120 | 1728090SM | 1 | KNOB, Cruise Lock Green Plastic |
| 0130 | 1960518SM | 2 | NUT, Push Pal |
| 0140 | 703228 | 2 | CAPSCREW, Hex Head, Taptite, 5/16-18 x 3/4 |
| 0150 | 703298 | 2 | WASHER, Plain, 5/16 |
| 0160 | 1727999SM | 1 | COVER, Steering Shaft Plastic |
| 0170 | 1727296SM | 1 | HEADLIGHT ASSEMBLY (Includes Ref. Nos. 0170-10, 0170-20, 0170-30 & 0170-40) |
| 0170-10 | 1728973SM | 1 | REFLECTOR, Headlight |
| 0170-20 | 1728974SM | 1 | LENS, Headlight |
| 0170-30 | 1677371SM | 2 | BULB, 1141-12V 21CP |
| 0170-30 | 1755317YP | 2 | BULB, LED (1156) |
| 0170-40 | 1723451SM | 2 | SOCKET ASSEMBLY |
| 0180 | 1960392SM | 3 | SCREW, Phillips Head |
| 0190 | 1723123SM | 1 | ROD, Dash Support |
| 0200 | 703412 | 3 | NUT, Nylock, #10-24 |
| 0210 | 1925003SM | 1 | SCREW, Self-Tap |
| 0220 | 1732030SM | 1 | GUIDE, Hood L.H. |
| 0230 | 1732031SM | 1 | GUIDE, Hood R.H. |
| 0240 | 1754094YP | 2 | POSITIONER, Hood |
| 0300 | 1731270BMYP | 1 | BUMPER |
| 0309 | 7102347YP | 1 | PLUG |
| 0310 | 703409 | 4 | NUT, Flange, 5/16-18 |
| 0320 | 703354 | 4 | SCREW, 5/16-18 x 3/4 |
| 0340 | 1755583YP | 1 | INSERT, Headlight |
| 1210 | 1960521SM | 2 | PUSHNUT |

Footnotes

The above parts group applies to the following Mfg. Nos.:

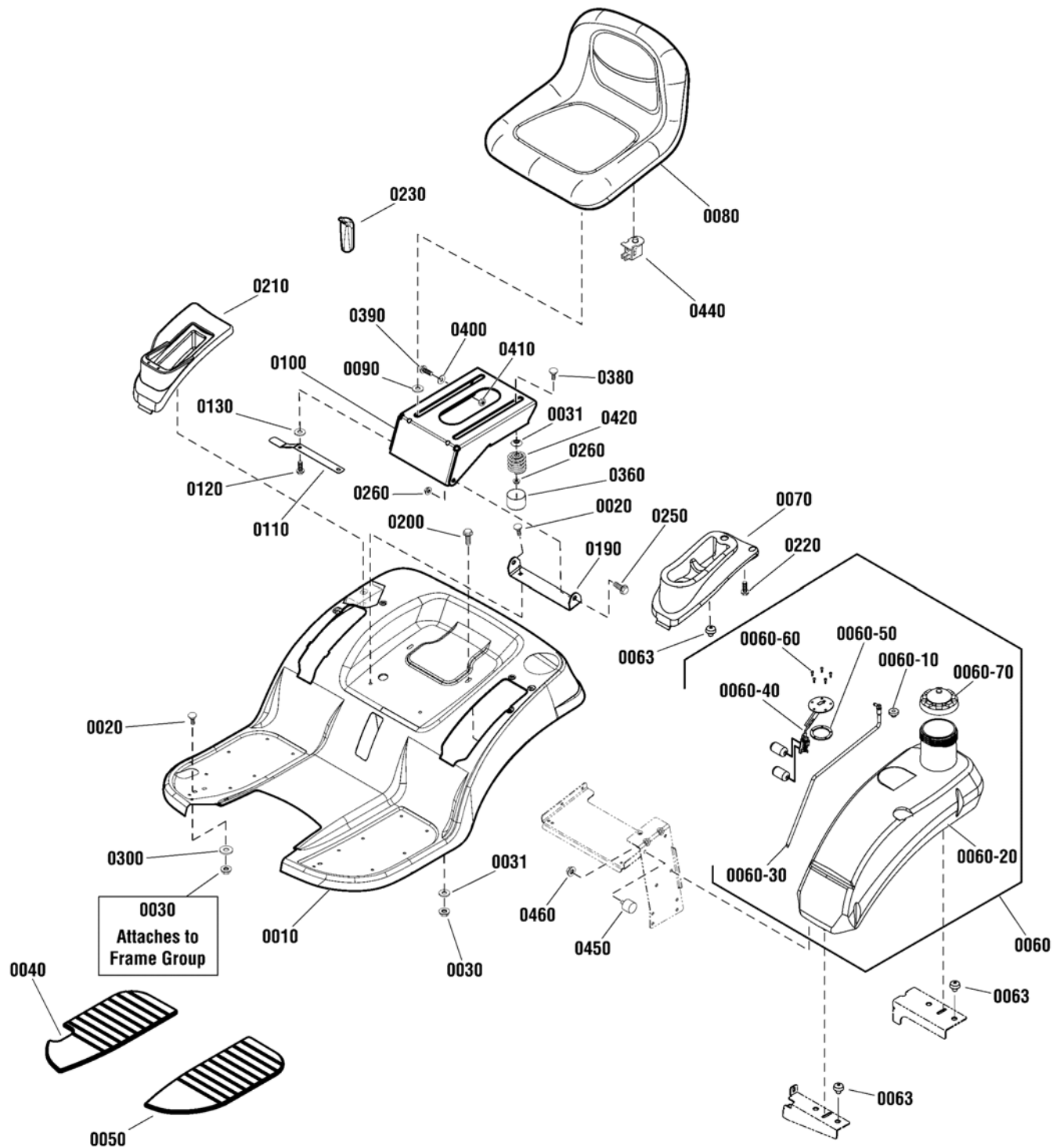
2691264-00 - SRD200

2691265-00 - SRD300

Seat Deck & Fuel Tank Group

2991772

NOTE: Unless noted otherwise,
use the standard hardware torque
specification chart.



The above parts group applies to the following Mfg. Nos.:

2691263-00 - SRD100

Seat Deck & Fuel Tank Group

| REF NO | PART NO. | QTY. | DESCRIPTION |
|---------|-------------|------|--|
| 0010 | 1758849CYP | 1 | SEAT DECK, Orange |
| 0020 | 703185 | 4 | BOLT, Carriage, 5/16-18 x 3/4, GR 5 |
| 0030 | 703409 | 6 | NUT, 5/16-18, GR 5 |
| 0031 | 1709256SM | 4 | WASHER, Spring, 5/16 |
| 0040 | 1728007SM | 1 | PAD, Footrest, RH |
| 0050 | 1728006SM | 1 | PAD, Footrest, LH |
| 0060 | 1758414YP | 1 | FUEL TANK ASSEMBLY |
| 0060-10 | 1654930SM | 1 | BUSHING, Fuel Tank |
| 0060-20 | ---- | 1 | FUEL TANK |
| 0060-30 | 1758506YP | 1 | TUBE, Fuel Pickup |
| 0060-40 | 1758611YP | 1 | SENDER, Fuel |
| 0060-50 | 1758898YP | 1 | PLATE, Mounting, Fuel Sender |
| 0060-60 | 2860665SM | 5 | SCREW, Pan Head Torx, #10-32 x 1/2 |
| 0060-70 | 5101651SM | 1 | CAP, Fuel |
| 0063 | 197546GS | 5 | MOUNT, Vibration |
| 0070 | 1758774YP | 1 | POD, LH |
| 0080 | 1754213YP | 1 | SEAT |
| 0080 | 1759179YP | 1 | SEAT, With Armrest |
| 0090 | 1731300SM | 4 | SPACER, 5/16 ID x 1-1/4 OD x 5/16" |
| 0100 | 1755767BMYP | 1 | SUPPORT, Seat |
| 0110 | 1727268BMYP | 1 | LATCH, Seat |
| 0120 | 1930595SM | 4 | SCREW, Hex Flange, Whiz Lock, 5/16-1-1/4 |
| 0130 | 703298 | 4 | WASHER, 5/16 |
| 0190 | 885538AYP | 1 | PIVOT, Seat |
| 0200 | 703949 | 2 | SCREW, Hex Washer Head, Taptite, 5/16-18 x 5/8 |
| 0210 | 1739537YP | 1 | POD, RH |
| 0220 | 1960536SM | 6 | SCREW, Hex Washer Head, Plastite, 1/4 x 1/2 |
| 0230 | 1722302SM | 1 | GRIP |
| 0250 | 703851 | 2 | BOLT, Shoulder, 5/16-18 x 1 |
| 0260 | 703115 | 4 | NUT, Flange Nylock, 5/16-18 |
| 0300 | 885382YP | 2 | WASHER, Rubber |
| 0360 | 1704724SM | 2 | COVER, Spring |
| 0380 | 703225 | 2 | BOLT, Carriage, 5/16-18 x 3/4, GR 5 |
| 0390 | 1923114SM | 1 | CAPSCREW, Hex Head, 1/2-13 x 1, GR 5 |
| 0400 | 703853 | 1 | WASHER, 1/2 |
| 0410 | 5025038SM | 1 | NUT, Hex, 1/2-13 |
| 0420 | 1704728SM | 2 | SPRING, Compression |
| 0440 | 7023354YP | 1 | SWITCH, Seat, Push Button |
| 0450 | 5022673 | 1 | BUMPER, Rubber |
| 0460 | 703233 | 1 | NUT, Flange, 1/4-20, GR5 |

Footnotes

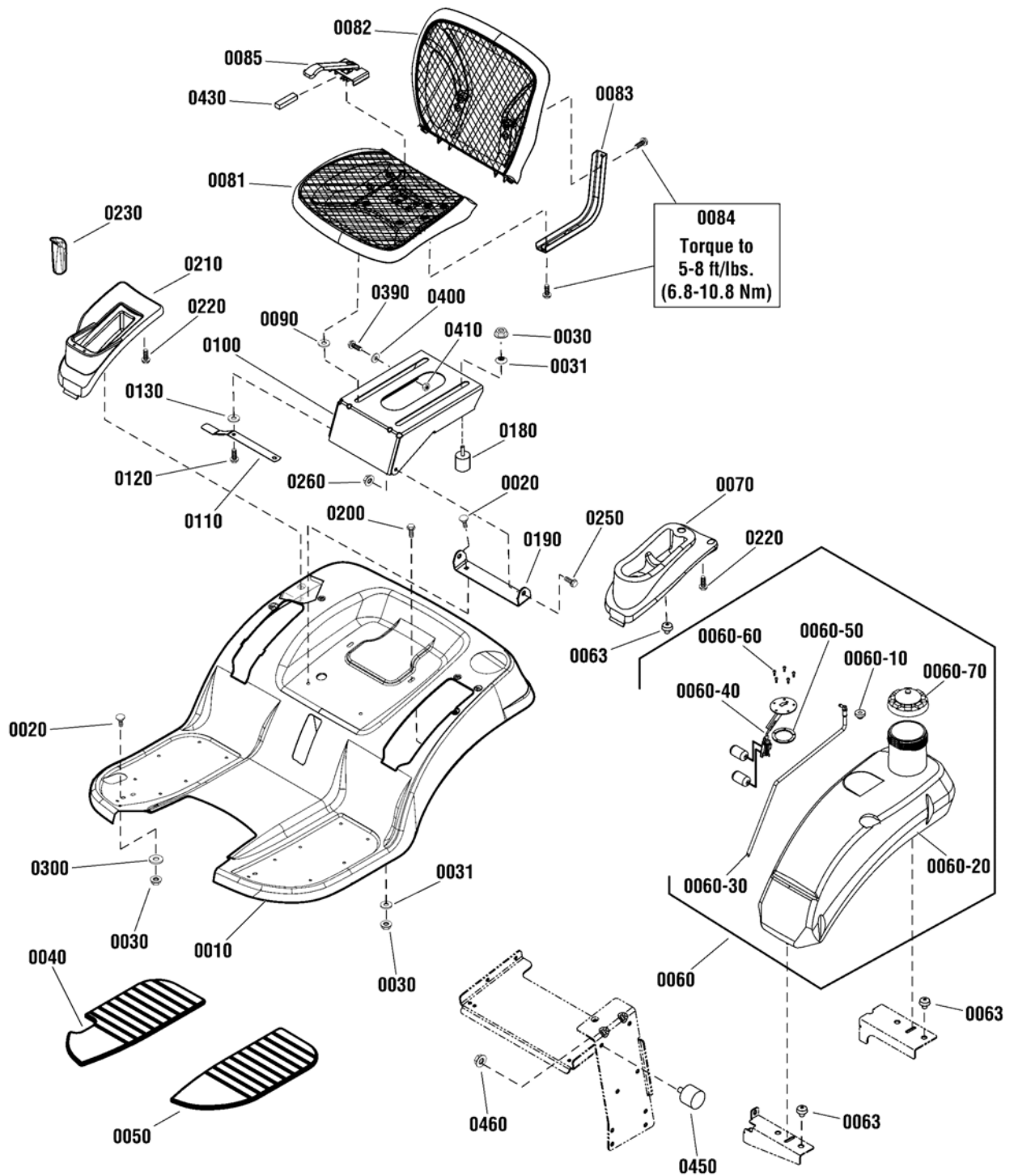
The above parts group applies to the following Mfg. Nos.:

2691263-00 - SRD100

Seat Deck & Fuel Tank Group

NOTE: Unless noted otherwise,
use the standard hardware torque
specification chart.

2991785



The above parts group applies to the following Mfg. Nos.:

2691264-00 - SRD200

2691265-00 - SRD300

Seat Deck & Fuel Tank Group

| REF NO | PART NO. | QTY. | DESCRIPTION |
|---------|-------------|------|--|
| 0010 | 1758849CYP | 1 | SEAT DECK, Orange |
| 0020 | 703185 | 4 | BOLT, Carriage, 5/16-18 x 3/4, GR 5 |
| 0030 | 703409 | 6 | NUT, 5/16-18, GR 5 |
| 0031 | 1709256SM | 4 | WASHER, Spring, 5/16 |
| 0040 | 1728007SM | 1 | PAD, Footrest, RH |
| 0050 | 1728006SM | 1 | PAD, Footrest, LH |
| 0060 | 1758414YP | 1 | FUEL TANK ASSEMBLY |
| 0060-10 | 1654930SM | 1 | BUSHING, Fuel Tank |
| 0060-20 | ---- | 1 | FUEL TANK |
| 0060-30 | 1758506YP | 1 | TUBE, Fuel Pickup |
| 0060-40 | 1758611YP | 1 | SENDER, Fuel |
| 0060-50 | 1758898YP | 1 | PLATE, Mounting, Fuel Sender |
| 0060-60 | 2860665SM | 5 | SCREW, Pan Head Torx, #10-32 x 1/2 |
| 0060-70 | 5101651SM | 1 | CAP, Fuel |
| 0063 | 197546GS | 5 | MOUNT, Vibration |
| 0070 | 1758774YP | 1 | POD, LH |
| 0081 | 1738013YP | 1 | SEAT, Bottom |
| 0082 | 1738014YP | 1 | SEAT, Top |
| 0083 | 1737848BMYP | 2 | Support, Seat |
| 0084 | 703354 | 8 | SCREW, 5/16-18 x3/4 |
| 0085 | 1738015YP | 1 | SWITCH, Seat |
| 0090 | 1731300SM | 4 | SPACER, 5/16 ID x 1-1/4 OD x 5/16" |
| 0100 | 1755767BMYP | 1 | SUPPORT, Seat |
| 0110 | 1727268BMYP | 1 | LATCH, Seat |
| 0120 | 1930595SM | 4 | Screw, Whiz Lock, 5/16 x 1 1/4 |
| 0130 | 703298 | 4 | WASHER, 5/16 |
| 0180 | 1739934YP | 2 | BUMPER |
| 0190 | 885538AYP | 1 | PIVOT, Seat |
| 0200 | 703949 | 2 | SCREW, Hex Washer Head, Taptite, 5/16-18 x 5/8 |
| 0210 | 1739537YP | 1 | POD, RH |
| 0220 | 1960536SM | 6 | SCREW, Hex Washer Head, Plastite, 1/4 x 1/2 |
| 0230 | 1722302SM | 1 | GRIP |
| 0250 | 703851 | 2 | BOLT, Shoulder, 5/16-18 x 1 |
| 0260 | 703115 | 4 | NUT, Flange Nylock, 5/16-18 |
| 0300 | 885382YP | 2 | WASHER, Rubber |
| 0390 | 1923114SM | 1 | CAPSCREW, Hex Head, 1/2-13 x 1, GR 5 |
| 0400 | 703853 | 1 | WASHER, 1/2 |
| 0410 | 5025038SM | 1 | NUT, Hex, 1/2-13 |
| 0430 | 5022673SM | 1 | FOAM |
| 0450 | 5022673SM | 1 | BUMPER |
| 0460 | 703233 | 1 | NUT, 1/4-20 |

Footnotes

The above parts group applies to the following Mfg. Nos.:

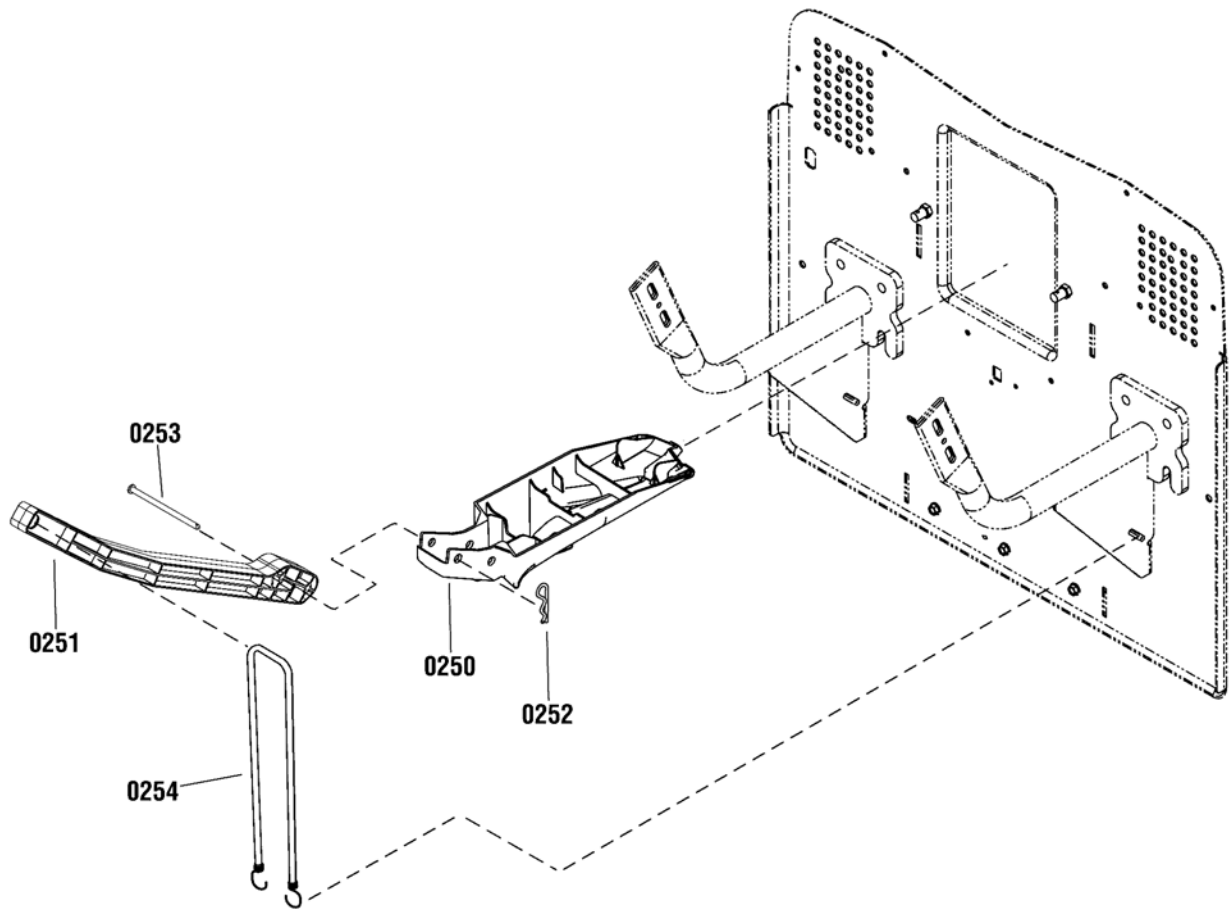
2691264-00 - SRD200

2691265-00 - SRD300

Mulch Plug Group

NOTE: Unless noted otherwise,
use the standard hardware torque
specification chart.

2991766b



The above parts group applies to the following Mfg. Nos.:

2691263-00 - SRD100

2691264-00 - SRD200

2691265-00 - SRD300

Mulch Plug Group

| REF NO | PART NO. | QTY. | DESCRIPTION |
|--------|----------|------|--------------------------|
| 0250 | 885642 | 1 | Plug, Mulch, 96cm (38") |
| 0250 | 885960 | 1 | Plug, Mulch, 107cm (42") |
| 0251 | 885643 | 1 | HANDLE, Mulch Plug |
| 0252 | 885647 | 2 | PIN, Clevis, 3/8 |
| 0253 | 1960074 | 2 | PIN, Hair Pin |
| 0254 | 885648 | 1 | CORD, Retainer |

Not for
Reproduction

Footnotes

The above parts group applies to the following Mfg. Nos.:

2691263-00 - SRD100

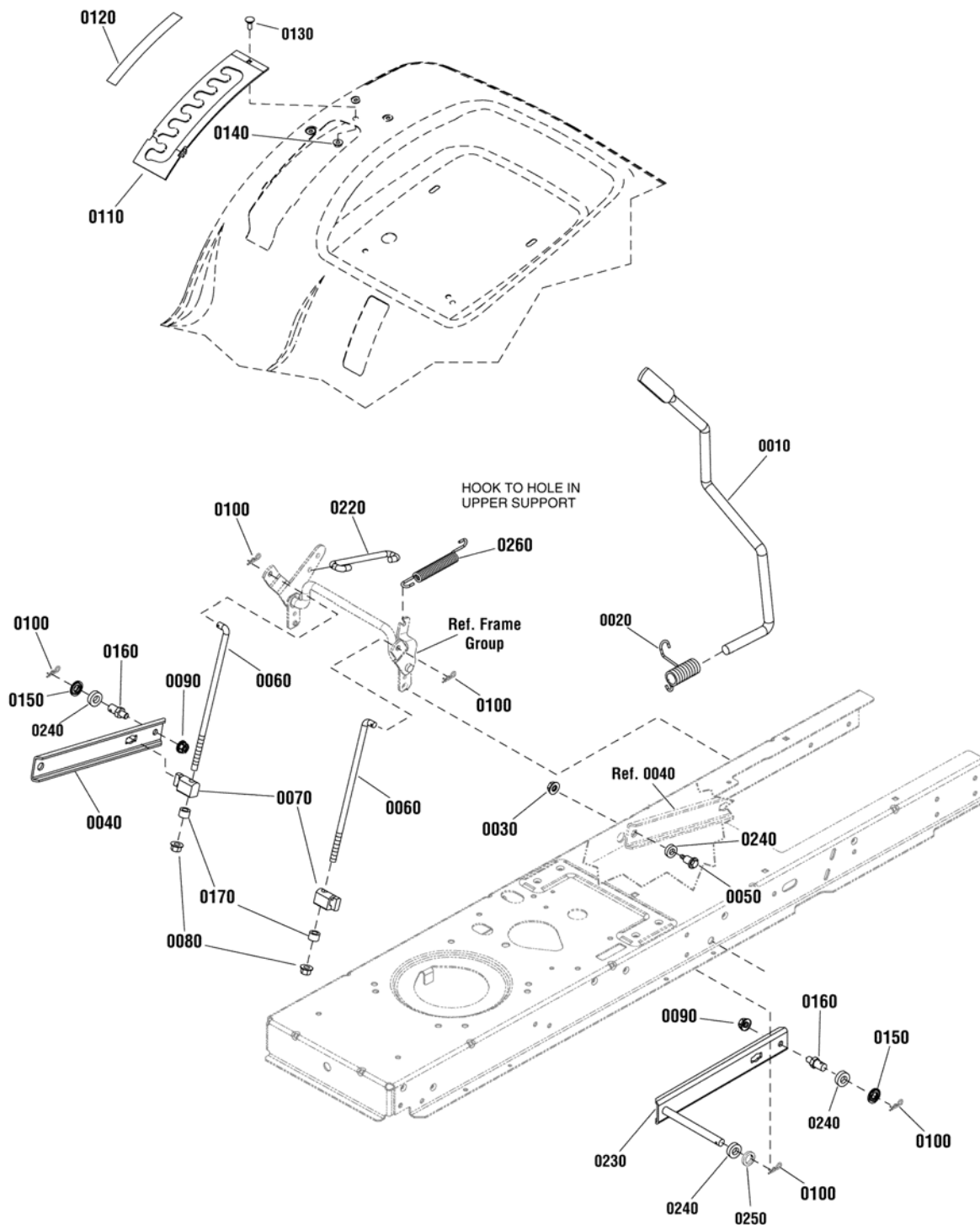
2691264-00 - SRD200

2691265-00 - SRD300

Lift Group

NOTE: Unless noted otherwise,
use the standard hardware torque
specification chart.

885450



The above parts group applies to the following Mfg. Nos.:

2691263-00 - SRD100

2691264-00 - SRD200

2691265-00 - SRD300

Lift Group

| REF NO | PART NO. | QTY. | DESCRIPTION |
|--------|-------------|------|------------------------------------|
| 0010 | 1728070SM | 1 | ROD, Lift Handle, 17.7" |
| 0020 | 1729652SM | 1 | SPRING, Torsion, 2.12 Inch |
| 0030 | 1931277SM | 1 | NUT, Hex, Flange Whizlock, 5/16-18 |
| 0040 | 1731417BMYP | 1 | ARM, Rear Lift, RH |
| 0050 | 1732426SM | 1 | BOLT, Shoulder |
| 0060 | 1727955SM | 2 | ROD, Lower Life, 10.00 LG |
| 0070 | 1731894SM | 2 | TRUNNION |
| 0080 | 1960687SM | 2 | NUT, Hex Flange, 3/8-16 ESNA |
| 0090 | 1931211SM | 2 | NUT, Hex, Flange Lock, 3/8-16 |
| 0100 | 1960074SM | 5 | CLIP, Spring |
| 0110 | 1727985ASM | 1 | QUADRANT, Lift Height |
| 0120 | 1730264SM | 1 | DECAL, Height Of Cut |
| 0130 | 1960252SM | 1 | BOLT, Carriage, 1/4-20 x 5/8 G5 |
| 0140 | 1930641SM | 1 | NUT, Hex Flange Whiz, 1/4-20 |
| 0150 | 1960170SM | 2 | WASHER, 1/2 |
| 0160 | 721221 | 2 | PIN, Threaded Shoulder |
| 0170 | 1666294SM | 2 | SPACER |
| 0220 | 1727954SM | 1 | ROD, Lift, 5.43 LG |
| 0230 | 885523AYP | 1 | ARM, Rear Lift, LH |
| 0240 | 885382YP | 4 | WASHER, Rubber |
| 0250 | 720173 | 1 | WASHER, Flat, .81 |
| 0260 | 722453 | 1 | SPRING, Extension |

Not for
Reproduction

Footnotes

The above parts group applies to the following Mfg. Nos.:

2691263-00 - SRD100

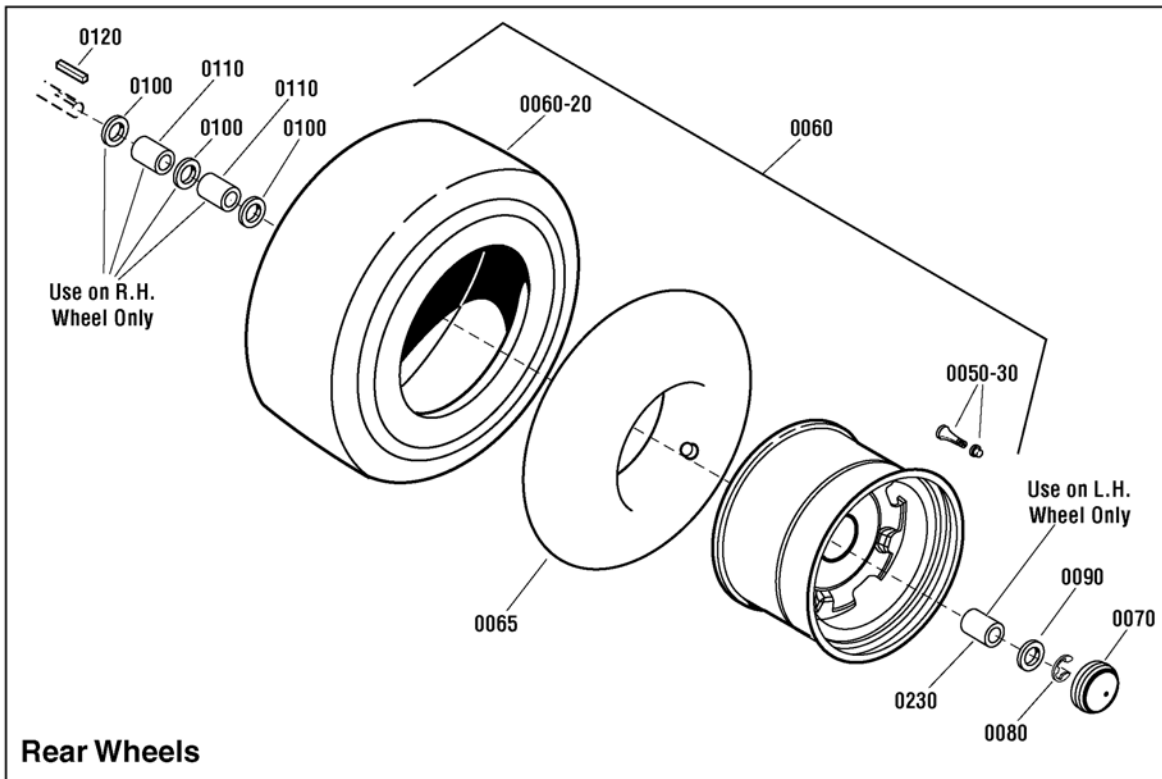
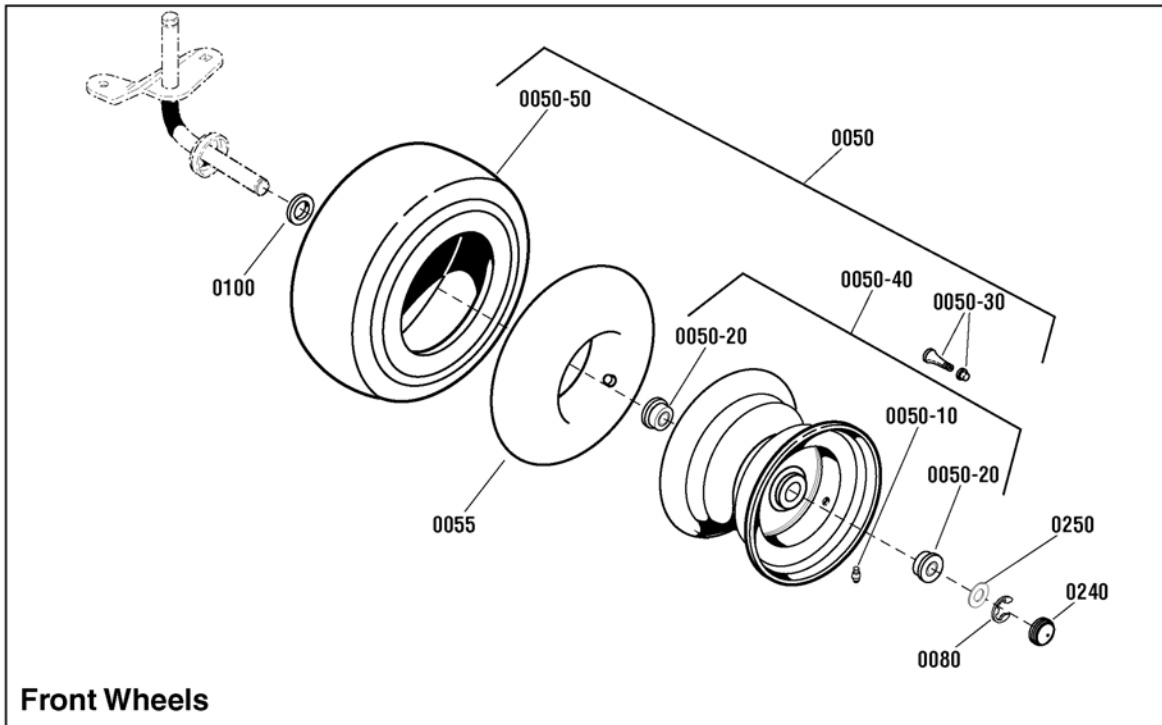
2691264-00 - SRD200

2691265-00 - SRD300

Wheel & Tire Group

NOTE: Unless noted otherwise,
use the standard hardware torque
specification chart.

2991661



The above parts group applies to the following Mfg. Nos.:

2691265-00 - SRD300

Wheel & Tire Group

| REF NO | PART NO. | QTY. | DESCRIPTION |
|---------|-----------|------|---|
| 0050 | 1729708SM | 2 | WHEEL& TIRE ASSEMBLY, Front (Includes Ref. Nos. 0050-10, 0050-20, 0050-30, 0050-40 & 0050-50) |
| 0050-10 | 2812808SM | 1 | FITTING, Lube |
| 0050-20 | 1713167SM | 2 | BEARING, 3/4 |
| 0050-30 | 2172353SM | 4 | VALVE STEM & CAP |
| 0050-40 | 1726301SM | 2 | WHEEL & BUSHINGS ASSEMBLY, Front (Includes Ref. Nos. 0050-10 & 0050-30) |
| 0050-50 | 1731951SM | 2 | TIRE, Kenda, Turf Rider, Front, 15 x 6.00 - 6 |
| 0055 | 1664090SM | 2 | TUBE, Tire, Front |
| 0060 | 7101569YP | 2 | WHEEL & TIRE ASSEMBLY, Rear, 20 X 8-8 (Includes Ref. Nos. 0050-30 & 0060-20) |
| 0060-20 | ---- | 1 | TIRE, Rear, 22 X 9.5 - 12 (Not a serviceable part, order Ref. 0060) |
| 0065 | 2164247SM | 2 | TUBE, Tire, Rear |
| 0070 | 1722676SM | 4 | HUB CAP |
| 0080 | 0011X3MA | 4 | E-RING |
| 0090 | 1722717SM | 4 | WASHER, Flat |
| 0100 | 17X160MA | 4 | WASHER, Flat, 3/4 x 1-1/4 |
| 0110 | 1730181SM | 2 | SPACER, 3/4 ID x 1-1/4 OD x 1-5/8, RH (Use on R.H. Side Only) |
| 0120 | 021553MA | 2 | KEY, Square, 3/16 |
| 0230 | 885578YP | 1 | SPACER, Wheel, LH (Use on L.H. Side Only) |
| 0240 | 1722675SM | 2 | HUBCAP |
| 0250 | 1960160SM | 2 | WASHER, 3/4 |

Not for
Reproduction

Footnotes

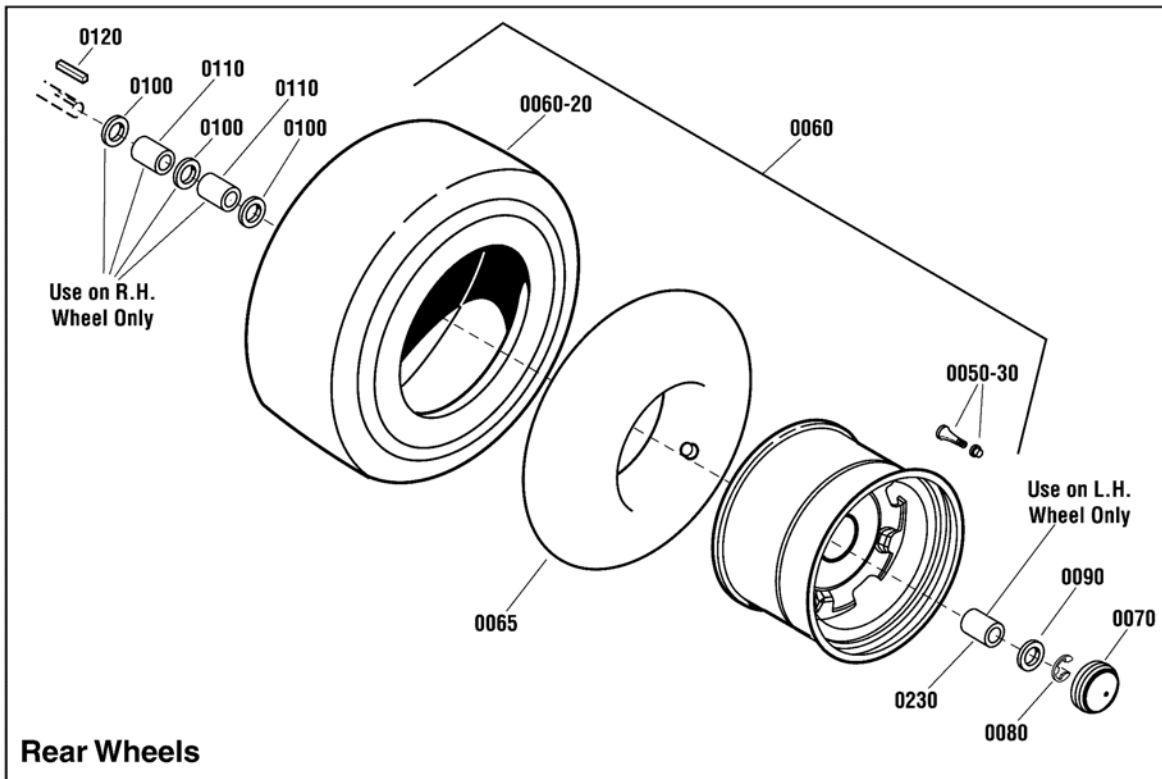
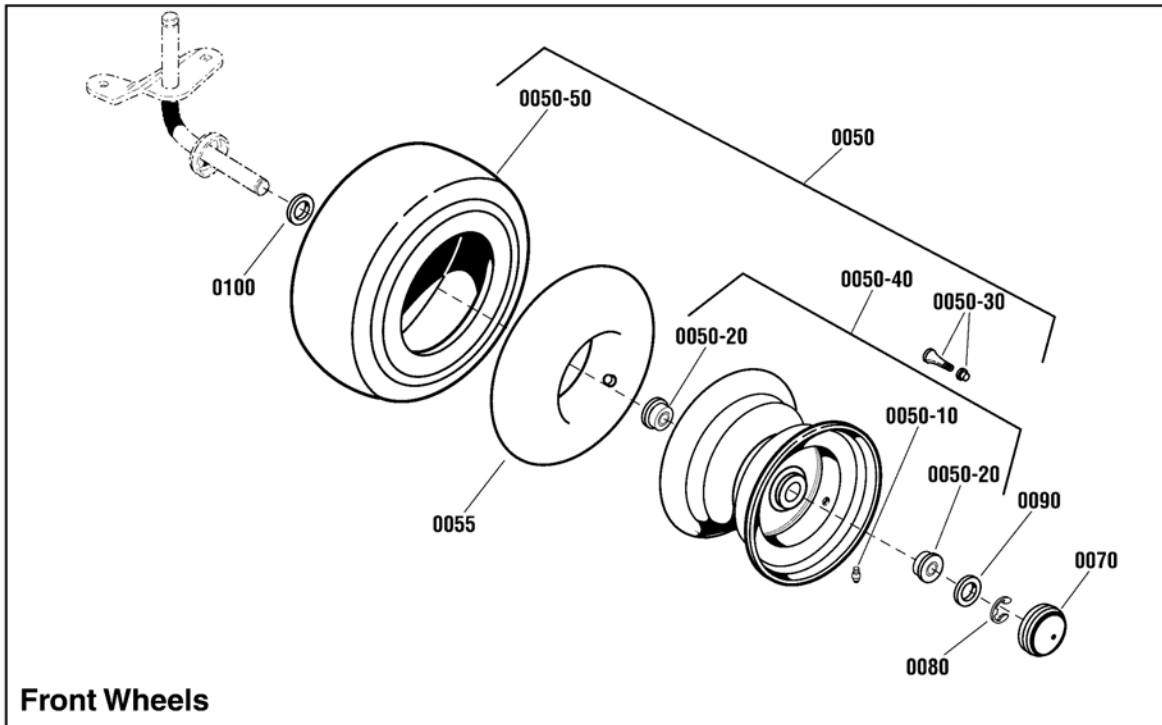
The above parts group applies to the following Mfg. Nos.:

2691265-00 - SRD300

Wheel & Tire Group

W885823

NOTE: Unless noted otherwise,
use the standard hardware torque
specification chart.



The above parts group applies to the following Mfg. Nos.:

2691263-00 - SRD100

2691264-00 - SRD200

Wheel & Tire Group

| REF NO | PART NO. | QTY. | DESCRIPTION |
|---------|----------|------|---|
| 0050 | 1729708 | 2 | WHEEL& TIRE ASSEMBLY, Front (Includes Ref. Nos. 0050-10, 0050-20, 0050-30, 0050-40 & 0050-50) |
| 0050-10 | 2812808 | 1 | FITTING, Lube |
| 0050-20 | 1713167 | 2 | BEARING, 3/4 |
| 0050-30 | 2172353 | 4 | VALVE STEM & CAP |
| 0050-40 | 1726301 | 1 | WHEEL & BUSHINGS ASSEMBLY, Front (Includes Ref. Nos. 0050-10 & 0050-30) |
| 0050-50 | 1731951 | 1 | TIRE, Kenda, Turf Rider, Front, 15 x 6.00 - 6 |
| 0055 | 1664090 | 2 | TUBE, Tire, Front |
| 0060 | 885457 | 2 | WHEEL & TIRE ASSEMBLY, Rear, 20 X 8-8 (Includes Ref. Nos. 0050-30 & 0060-20) |
| 0060-20 | ---- | 1 | TIRE, Rear, K358 x 20 x 8.94-8 (Not a serviceable part, order Ref. 0060) |
| 0065 | 2164247 | 2 | TUBE, Tire, Rear |
| 0070 | 721318 | 4 | HUB CAP |
| 0080 | 720010 | 4 | E-RING |
| 0090 | 722620 | 4 | WASHER, Flat |
| 0100 | 722598 | 4 | WASHER, Flat, 3/4 x 1-1/4 |
| 0110 | 1730181 | 2 | SPACER, 3/4 ID x 1-1/4 OD x 1-5/8, RH (Use on R.H. Side Only) |
| 0120 | 720258 | 2 | KEY, Square, 3/16 |
| 0230 | 885578 | 1 | SPACER, Wheel, LH (Use on L.H. Side Only) |

Not for
Reproduction

Footnotes

The above parts group applies to the following Mfg. Nos.:

2691263-00 - SRD100

2691264-00 - SRD200

Decals Group

| REF NO | PART NO. | QTY. | DESCRIPTION |
|--------|-----------|------|--------------------------|
| 0010 | 1720389SM | 2 | DECAL, Danger, Blades |
| 0020 | 1755715YP | 1 | DECAL, Mower Width |
| 0030 | 1721107SM | 1 | DECAL, Danger, Discharge |
| 0040 | 48X511MA | 1 | DECAL, Drawbar |
| 0050 | 1755843YP | 1 | BADGE, Steering |
| 0060 | 1722806SM | 1 | DECAL, Ignition |
| 0080 | 1755900YP | 1 | BADGE, LH |
| 0090 | 1750191YP | 1 | DECAL, Tunnel |
| 0100 | 7101935YP | 1 | DECAL, Roll Release |
| 0120 | 1759026YP | 1 | DECAL, Regent, RD |
| 0140 | 1755901YP | 1 | BADGE, RH |
| 0220 | 1755798YP | 1 | BADGE, Simplicity |
| 0230 | 1755716YP | 1 | DECAL, Mower Width |

Not for
Reproduction

Footnotes

The above parts group applies to the following Mfg. Nos.:

2691263-00 - SRD100

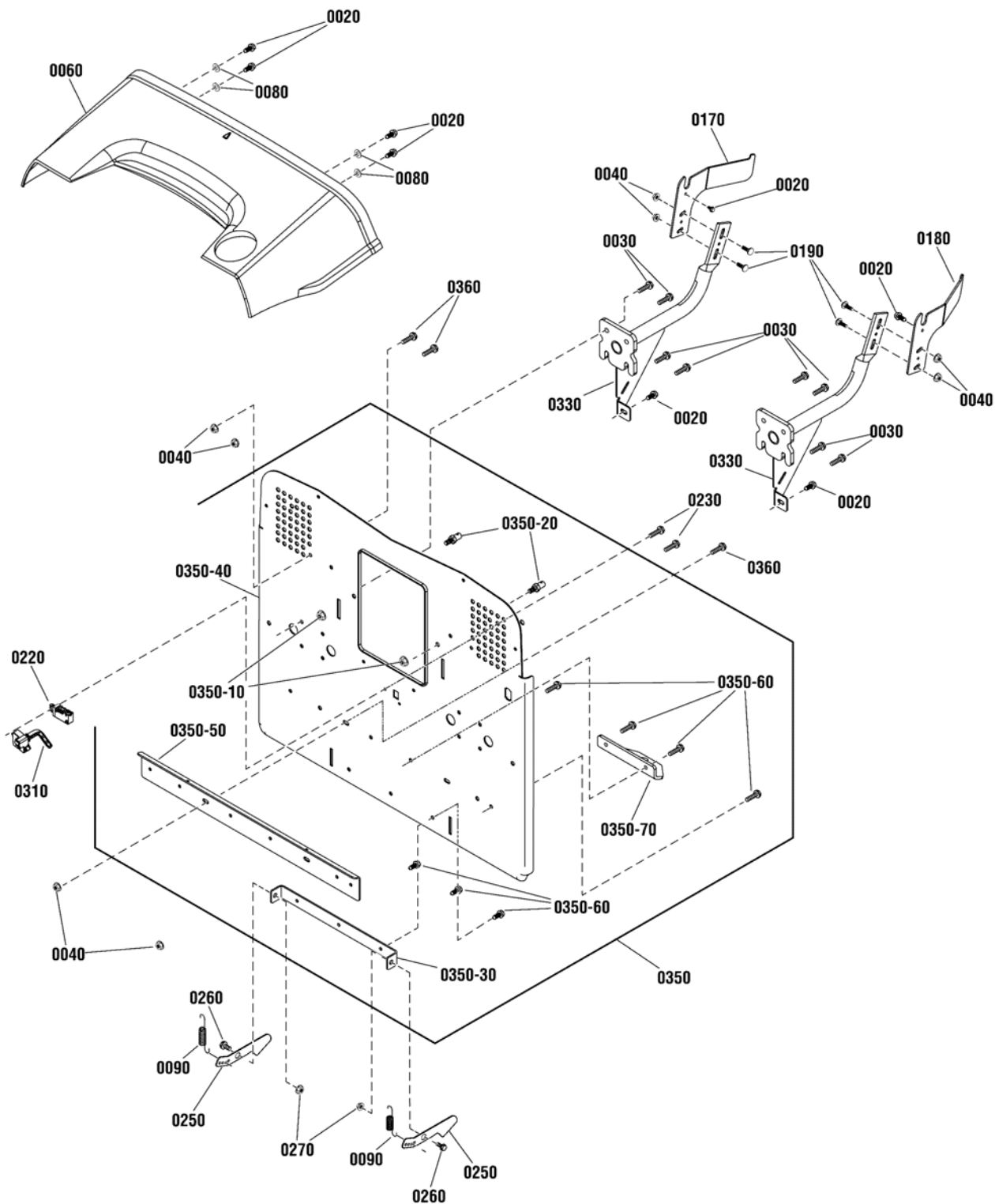
2691264-00 - SRD200

2691265-00 - SRD300

Backplate Group

2991755

NOTE: Unless noted otherwise,
use the standard hardware torque
specification chart.



The above parts group applies to the following Mfg. Nos.:

2691263-00 - SRD100

2691264-00 - SRD200

2691265-00 - SRD300

Backplate Group

| REF NO | PART NO. | QTY. | DESCRIPTION |
|---------|-------------|------|---|
| 0020 | 703228 | 8 | SCREW, 5/16-18 x 3/4 |
| 0030 | 703167 | 8 | SCREW, Taptite, 5/16-18 x 1-1/4 |
| 0040 | 703409 | 10 | NUT, Flange, 5/16-18 |
| 0060 | 1758498YP | 1 | TRANSITION PIECE |
| 0080 | 1919326SM | 4 | WASHER, Flat |
| 0090 | 165X75MA | 2 | SPRING, Extension |
| 0170 | 885853BMYP | 1 | ROTATION PLATE, RH |
| 0180 | 885852BMYP | 1 | ROTATION PLATE, LH |
| 0190 | 703185 | 4 | BOLT, Carriage, 5/16-18 x 3/4 |
| 0220 | 885573YP | 1 | SWITCH, Bag Full |
| 0230 | 880760YP | 2 | SCREW, Plastite, #10-14 x 7/8 |
| 0250 | 1758530BMYP | 2 | LATCH |
| 0260 | 009X39MA | 2 | BOLT, Shoulder, 3/8-16 x 3/4 |
| 0270 | 703893 | 2 | NUT, Center Lock, Flange, 3/8-16 |
| 0310 | 885618YP | 1 | COVER, Bag Full Switch |
| 0330 | 1758925BMYP | 2 | SUPPORT, Bagger |
| 0350 | 885893BMYP | 1 | BACK PLATE ASSEMBLY (Includes Ref. Nos. 0350-10 thru 0350-70) |
| 0350-10 | 703893 | 2 | NUT, Center Lock Flange, 3/8-16 |
| 0350-20 | 704054 | 2 | PIN, Threaded, 3/8-16 x 5/8 |
| 0350-30 | 885497AYP | 1 | BRACKET, Bagger Latch |
| 0350-40 | ---- | 1 | BACK PLATE |
| 0350-50 | 885891BMYP | 1 | BRACE, Lower |
| 0350-60 | 703228 | 7 | SCREW, 5/16-18 x 3/4 |
| 0350-70 | 885468YP | 1 | PLATE, Hitch |
| 0360 | 703410 | 6 | BOLT, 5/16-18 x 1 |

Footnotes

The above parts group applies to the following Mfg. Nos.:

2691263-00 - SRD100

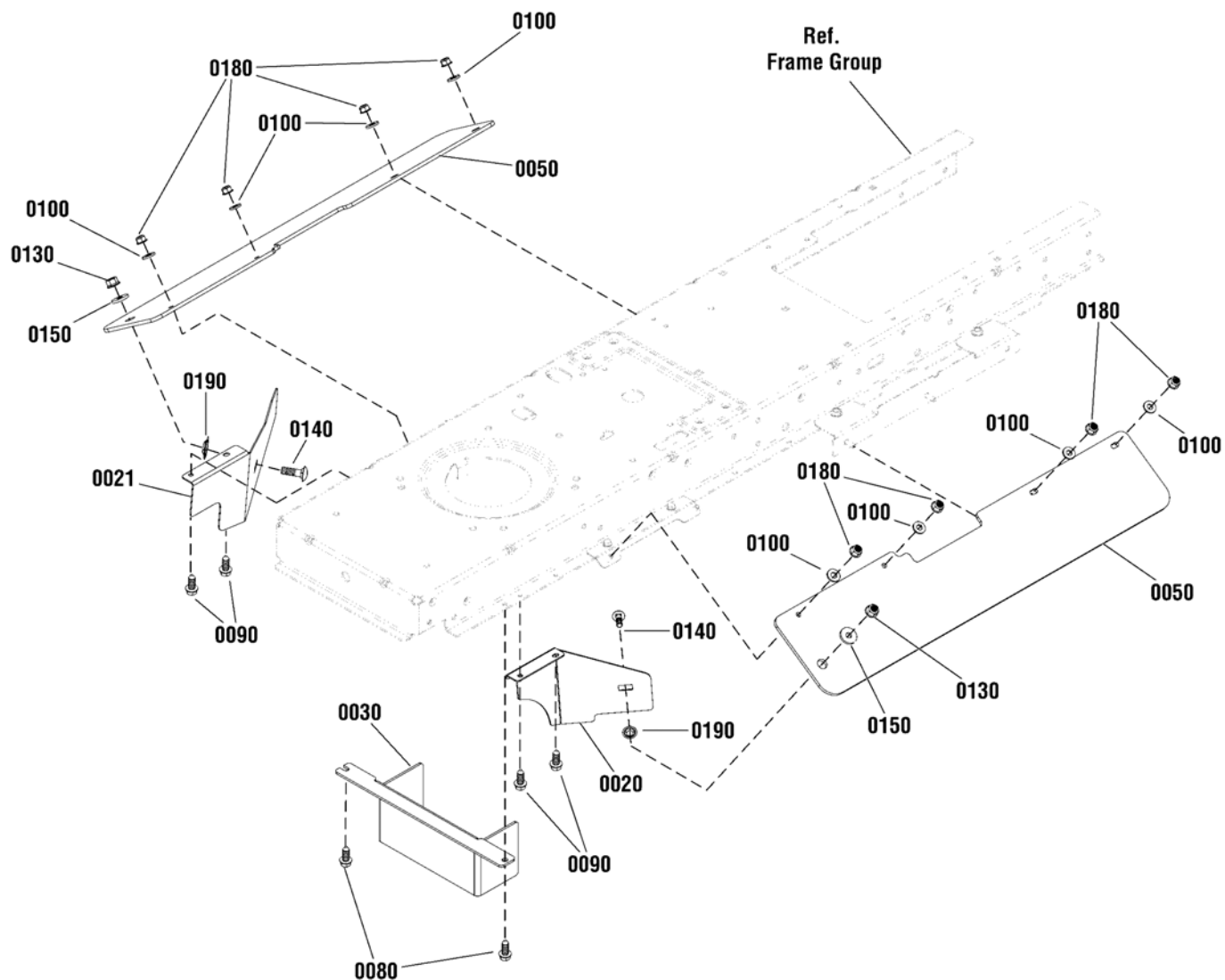
2691264-00 - SRD200

2691265-00 - SRD300

Bystander Group

2991667

NOTE: Unless noted otherwise,
use the standard hardware torque
specification chart.



The above parts group applies to the following Mfg. Nos.:

2691263-00 - SRD100

2691264-00 - SRD200

2691265-00 - SRD300

Bystander Group

| REF NO | PART NO. | QTY. | DESCRIPTION |
|---------------|-----------------|-------------|----------------------------------|
| 0020 | 1758975BMYP | 1 | GUARD, Front, LH |
| 0021 | 1758976BMYP | 1 | GUARD, Front, RH |
| 0030 | 1758977BM | 1 | GUARD, Front |
| 0050 | 1758983YP | 2 | GUARD, Frame |
| 0080 | 703228 | 2 | SCREW, 5/16-18 x 3/4 |
| 0090 | 704130 | 4 | SCREW, Taptite, 1/4-20 x 1/2 |
| 0100 | 703332 | 8 | WASHER, Flat, 1/4 |
| 0130 | 703115 | 2 | NUT, Flange, Nylock, 5/16-18 |
| 0140 | 703800 | 2 | BOLT, Carriage Bolt, 5/16-18 x 1 |
| 0150 | 703298 | 2 | WASHER, Flat, 5/16, GR5 |
| 0180 | 703463 | 8 | NUT, Flange, Nylock, 1/4-20, GR5 |
| 0190 | 703297 | 2 | PUSHNUT, 5/16 |

Not for
Reproduction

Footnotes

The above parts group applies to the following Mfg. Nos.:

2691263-00 - SRD100

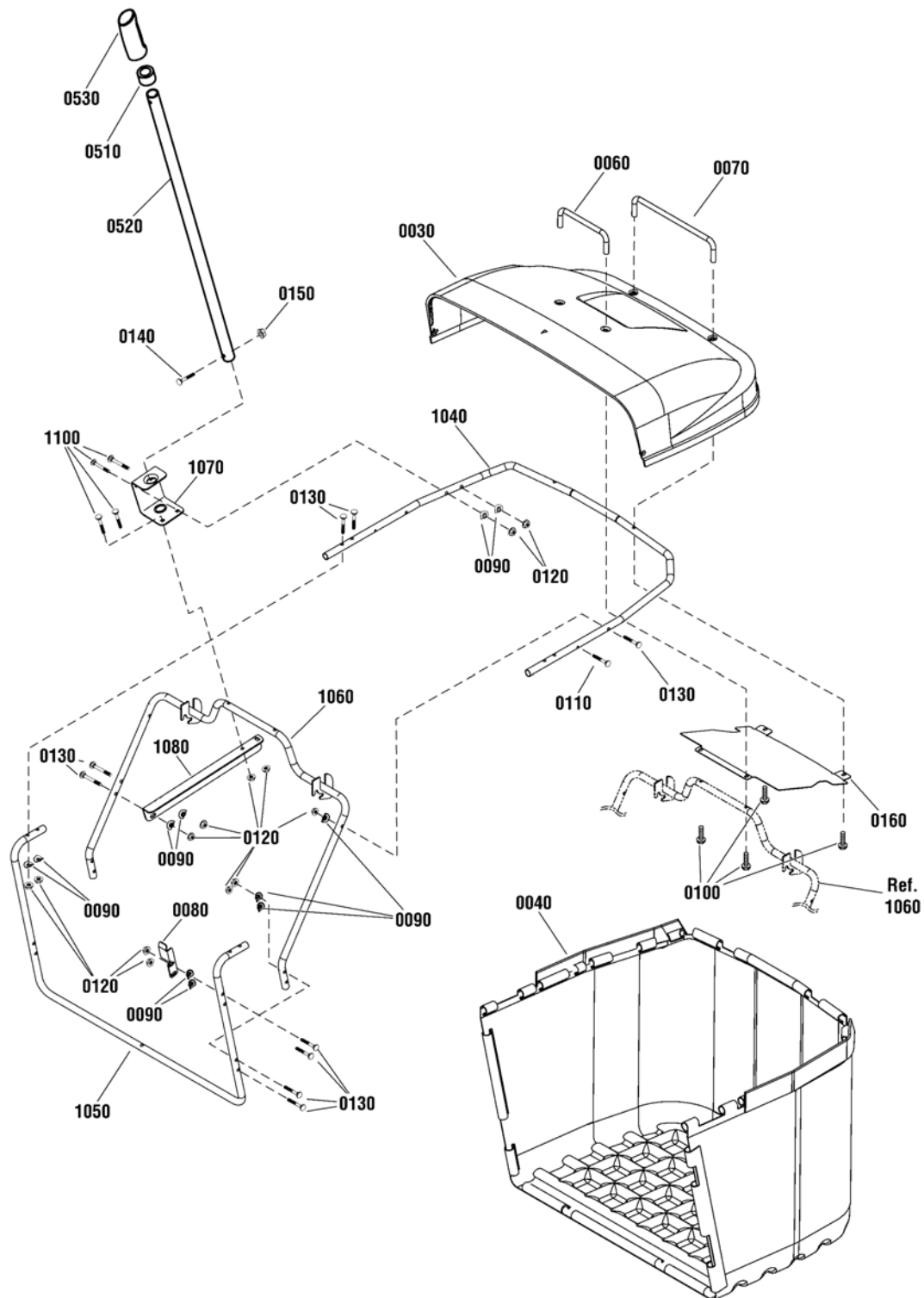
2691264-00 - SRD200

2691265-00 - SRD300

Collector Group

2991663

NOTE: Unless noted otherwise,
use the standard hardware torque
specification chart.



The above parts group applies to the following Mfg. Nos.:

2691263-00 - SRD100

2691264-00 - SRD200

2691265-00 - SRD300

Collector Group

| REF NO | PART NO. | QTY. | DESCRIPTION |
|--------|-------------|------|---|
| 0030 | 1758510YP | 1 | COVER, Collector |
| 0040 | 1758532YP | 1 | BAG, Collector |
| 0060 | 1758751BMYP | 1 | HANDLE, Front |
| 0070 | 885430AYP | 1 | HANDLE, Back |
| 0080 | 1758781BMYP | 1 | SWITCH PLATE |
| 0090 | 880615YP | 16 | WASHER |
| 0100 | 706884 | 4 | SCREW , Hex Washer Head, 1/4-20 x 1-1/2 |
| 0110 | 885564YP | 2 | SCREW, Torx, 1/4-20 |
| 0120 | 703115 | 18 | NUT, Nylock Flange, 5/16-18 |
| 0130 | 706883 | 12 | SCREW, 5/16-18 x 2 |
| 0140 | 001X94MA | 1 | BOLT, Hex, 1/4-20 x 1-1/4 |
| 0150 | 015X89MA | 1 | NUT, Hex Flange, 1/4-20 |
| 0160 | 1758926BMYP | 1 | SHIELD, Collector |
| 0510 | 885433YP | 1 | ADJUSTER, Handle |
| 0520 | 885518AYP | 1 | HANDLE, Bagger |
| 0530 | 1723359SM | 1 | GRIP |
| 1040 | 1758255BMYP | 1 | FRAME, Bagger Support, Upper |
| 1050 | 1758256BMYP | 1 | FRAME, Bagger Support, Front |
| 1060 | 1758329BMYP | 1 | FRAME, Bagger Support |
| 1070 | 1758357BMYP | 1 | SUPPORT, Dump Handle |
| 1080 | 1758659BMYP | 1 | BRACKET Dump Handle |
| 1100 | 703296 | 4 | BOLT, Carriage, 5/16-18 x 1-1/2 |

Not for
Reproduction

Footnotes

The above parts group applies to the following Mfg. Nos.:

2691263-00 - SRD100

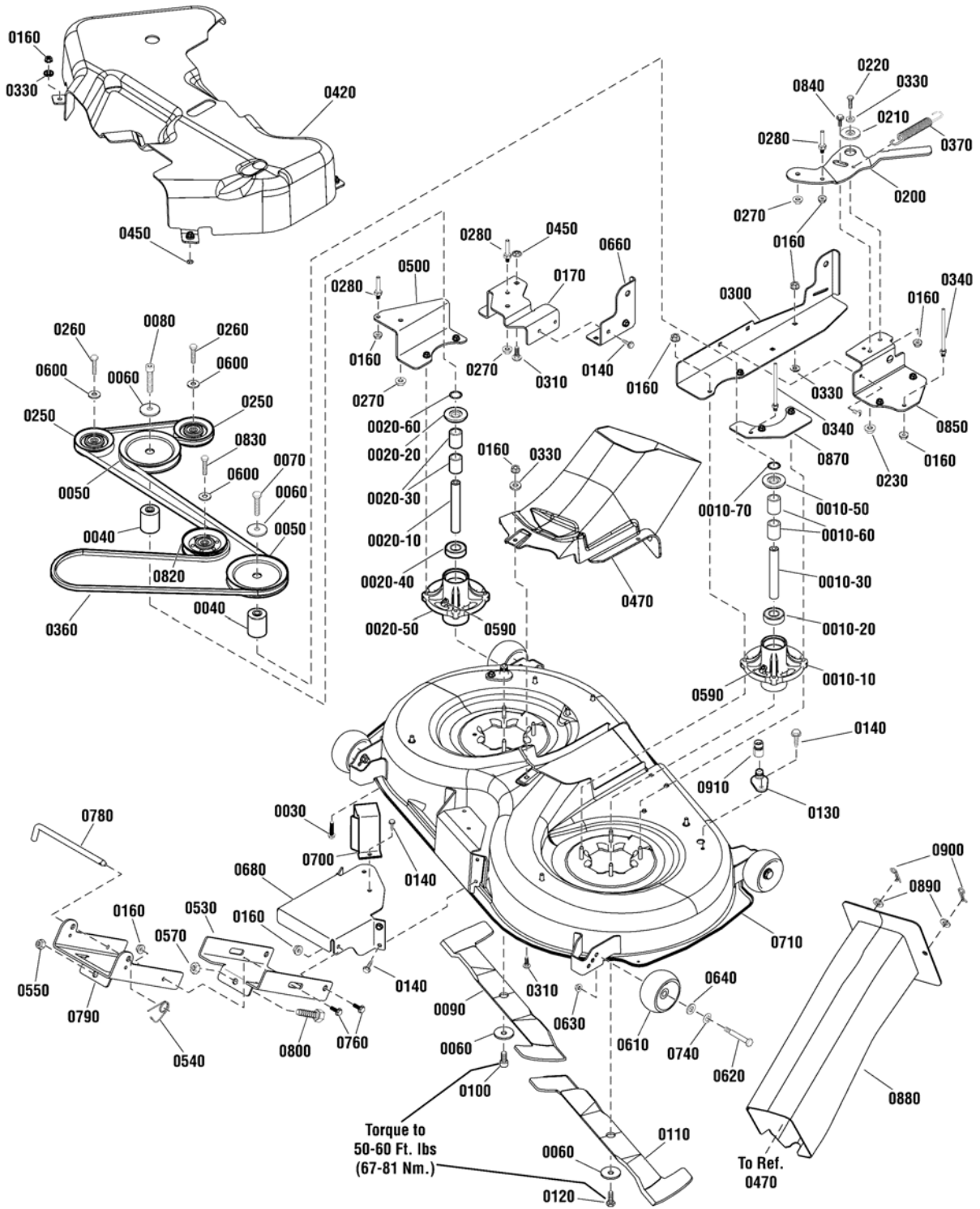
2691264-00 - SRD200

2691265-00 - SRD300

107cm Mower Deck - Housing & Blades Group

NOTE: Unless noted otherwise,
use the standard hardware torque
specification chart.

2991664



The above parts group applies to the following Mfg. Nos.:

2691265-00 - SRD300

107cm Mower Deck - Housing & Blades Group

| REF NO | PART NO. | QTY. | DESCRIPTION |
|---------|-------------|------|--|
| 0010-10 | 1735573YP | 1 | HOUSING, Spindle |
| 0010-20 | 1735399YP | 2 | BEARING, Ball |
| 0010-30 | 1735326YP | 1 | SHAFT, Spindle |
| 0010-50 | 1735323YP | 2 | SHIELD, Arbor |
| 0010-60 | 1735328YP | 2 | SPACER, Bearing |
| 0010-70 | 1960766YP | 2 | RING, Self Lock |
| 0020-10 | 885420YP | 1 | SHAFT, Spindle, RH (LH Thread) |
| 0020-20 | 1735323YP | 2 | SHIELD, Arbor |
| 0020-30 | 1735328YP | 2 | SPACER, Bearing |
| 0020-40 | 1735399YP | 2 | BEARING, Ball |
| 0020-50 | 1735573YP | 1 | HOUSING, Spindle |
| 0020-60 | 1960766YP | 2 | RING, Self Lock |
| 0030 | 1930600SM | 8 | SCREW, Hex Washer Head, Taptite, 5/16-18 x 1-1/2 |
| 0040 | 1750338YP | 2 | SPACER, Mower Drive |
| 0050 | 1758750YP | 2 | PULLEY |
| 0060 | 1656916SM | 4 | WASHER, Spring, 0.475 |
| 0070 | 1926110SM | 1 | CAPSCREW, Hex Head, 7/16-14 x 2-3/4, GR5 |
| 0080 | 885456YP | 1 | CAPSCREW, Socket Head, 7/16-14 x 2-3/4 |
| 0090 | 1758513BMYP | 1 | BLADE, RH |
| 0100 | 885455YP | 1 | CAPSCREW, Socket Head, 7/16-14 x 1 |
| 0110 | 1758514BMYP | 1 | BLADE, LH |
| 0120 | 1920676SM | 1 | CAPSCREW, Hex Head, 7/16-14 x 1, GR5 |
| 0130 | 1735716YP | 2 | ADAPTER, Washout Port |
| 0140 | 703228 | 6 | SCREW, Thread Roll, 5/16-18 x 3/4 |
| 0160 | 1931277SM | 40 | NUT, Flange, 5/16-18, GR5 |
| 0170 | 885723BMYP | 1 | SUPPORT, Idler Arm |
| 0200 | 1758759BM | 1 | IDLER ARM |
| 0210 | 1727935SM | 1 | SPACER, Pivot, 5/16 ID x 1-3/4 OD |
| 0220 | 001X84MA | 1 | CAPSCREW, Hex Head, 5/16-18 x 1, GR5 |
| 0230 | 015X88MA | 1 | NUT, Hex Flange, Center Lock, 5/16-18 |
| 0250 | 885482YP | 2 | PULLEY, Deck Idler |
| 0260 | 1923701SM | 2 | CAPSCREW, Hex Head, 3/8-16 x 2, GR5 |
| 0270 | 703333 | 3 | NUT, Hex Flange, 3/8-16 |
| 0280 | 885534YP | 2 | BELT GUIDE |
| 0300 | 885724BMYP | 1 | BRACKET, Deck, Rear Lift, LH |
| 0310 | 703185 | 14 | BOLT, Carriage, 5/16-18 x 3/4, GR5 |
| 0330 | 1919326SM | 10 | WASHER, Flat, 5/16 |
| 0340 | 1401105MA | 1 | BELT GUIDE, LONG |
| 0360 | 1758760YP | 1 | BELT |
| 0370 | 1715435SM | 1 | SPRING, Extension |
| 0420 | 1759109YP | 1 | COVER, Pulley |
| 0450 | 703297 | 4 | RETAINER, 5/16, GR5 |
| 0470 | 885719YP | 1 | CENTER CAP |
| 0500 | 885845BMYP | 1 | BRACKET, Idler, Fixed |

Footnotes

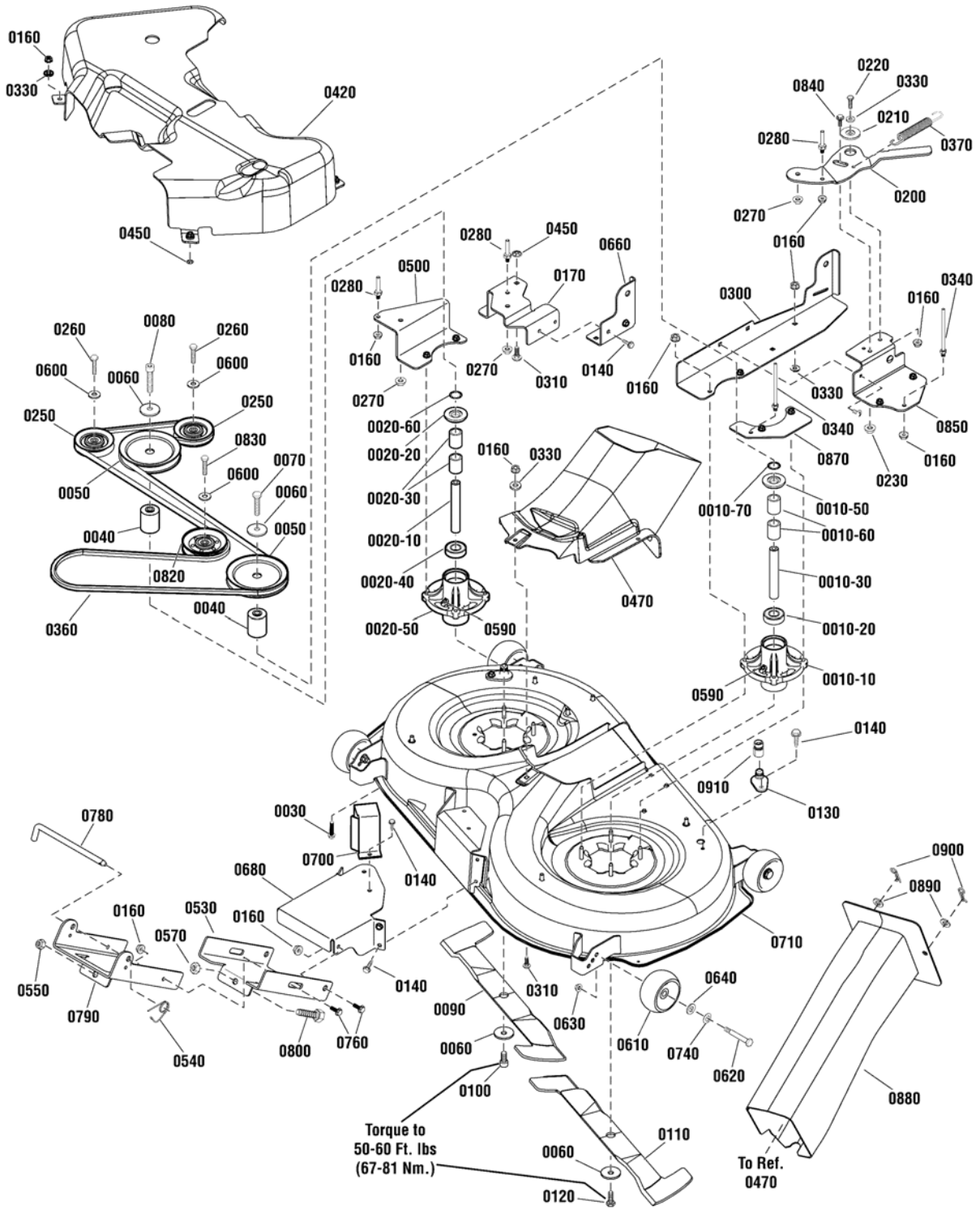
The above parts group applies to the following Mfg. Nos.:

2691265-00 - SRD300

107cm Mower Deck - Housing & Blades Group

2991664

NOTE: Unless noted otherwise,
use the standard hardware torque
specification chart.



The above parts group applies to the following Mfg. Nos.:

2691265-00 - SRD300

107cm Mower Deck - Housing & Blades Group

| REF NO | PART NO. | QTY. | DESCRIPTION |
|--------|------------|------|--|
| 0530 | 885734BMYP | 1 | BRACKET, Front Connector |
| 0540 | 2176012SM | 1 | RETAINER, Pin Spring |
| 0550 | 1960379SM | 1 | NUT, Hex Lock, ESNA Light, 1/2-13 |
| 0570 | 1913744SM | 1 | NUT, Hex Jam, 1/2-13 |
| 0590 | 1704314SM | 2 | FITTING, Lube |
| 0600 | 1922755SM | 2 | WASHER, Flat, 3/8 |
| 0610 | 1714760SM | 2 | WHEEL |
| 0620 | 2108765SM | 2 | BOLT, Wheel, 3/8-16 x 2-3/4, 3/4" Thread |
| 0630 | 703158 | 2 | NUT, Hex Flange, ESNA, 3/8-16 |
| 0640 | 1960170SM | 2 | WASHER, 1/2 |
| 0660 | 885720BMYP | 1 | BRACKET, Deck, Rear, RH |
| 0680 | 885727BMYP | 1 | SUPPORT, Front |
| 0700 | 885728BMYP | 1 | BRACKET, Front Upstop |
| 0710 | 885827BMYP | 1 | DECK, 42" |
| 0740 | 0020X3MA | 2 | WASHER, Spring, 1/2 |
| 0760 | 1732426SM | 4 | BOLT, Shoulder, 5/16-18 x 1/2 |
| 0780 | 1731414SM | 1 | ROD, Latch |
| 0790 | 885699BMYP | 1 | BRACKET, Front Hanger |
| 0800 | 885710YP | 1 | BOLT, 1/2 x 3 |
| 0820 | 885937YP | 1 | PULLEY, Idler |
| 0830 | 703406 | 1 | CAPSCREW, Hex Head, 3/8-16 x 1-1/2, G5 |
| 0840 | 1752802YP | 1 | BOLT, Shoulder, 5/16-18 x 1 |
| 0850 | 1758758BM | 1 | BRACKET, Idler Mount |
| 0870 | 1758757BM | 1 | PLATE, Belt Guide Mount |
| 0880 | 885769YP | 1 | CHUTE |
| 0890 | 703853 | 2 | WASHER, 1/2 |
| 0900 | 703300 | 2 | PIN, Hair |
| 0910 | 1756246YP | 1 | CONNECTOR, Washout Port |

Footnotes

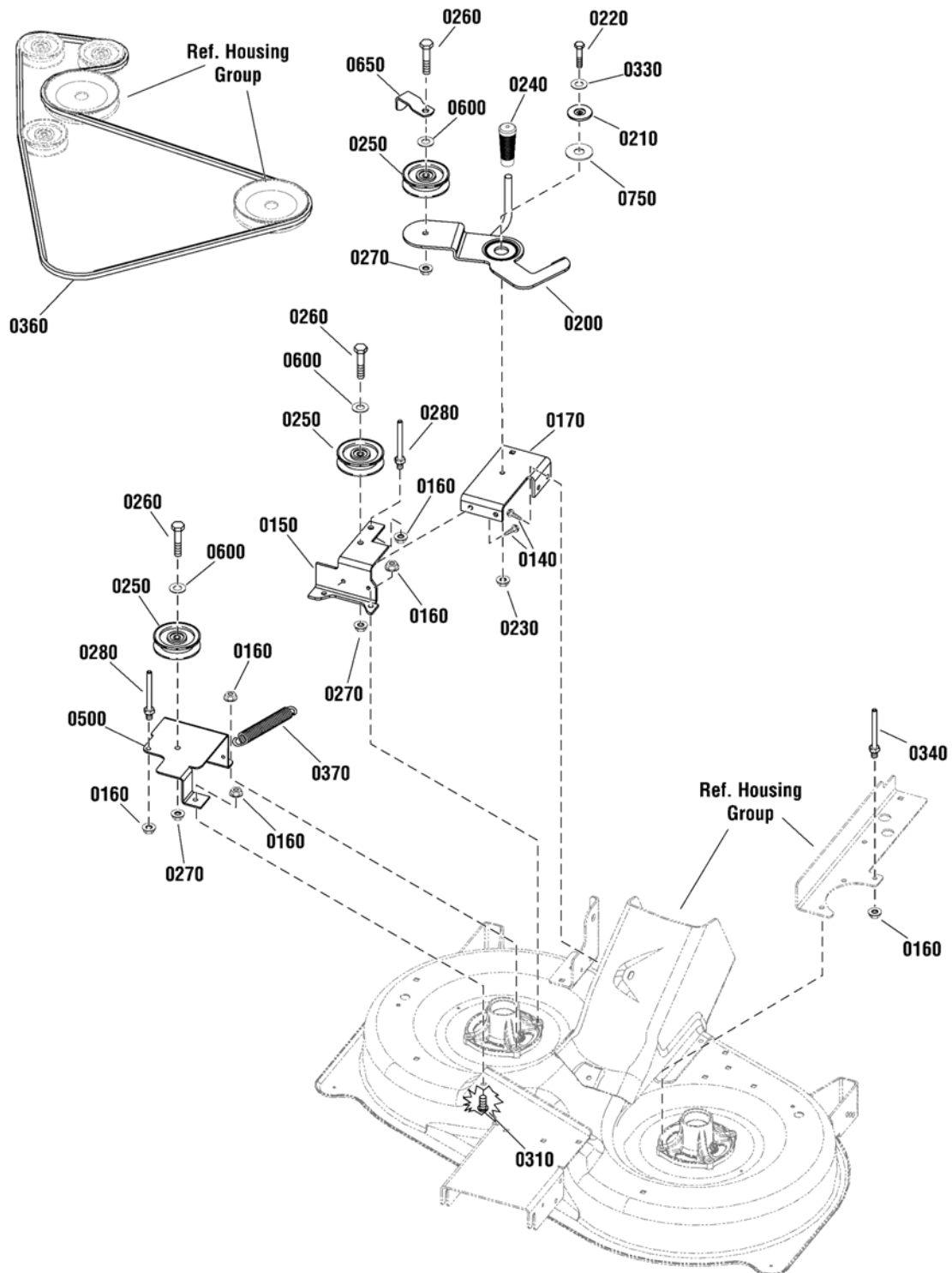
The above parts group applies to the following Mfg. Nos.:

2691265-00 - SRD300

96cm Mower Deck - Clutch Group

NOTE: Unless noted otherwise,
use the standard hardware torque
specification chart.

2991759b



The above parts group applies to the following Mfg. Nos.:

2691263-00 - SRD100

2691264-00 - SRD200

96cm Mower Deck - Clutch Group

| REF NO | PART NO. | QTY. | DESCRIPTION |
|--------|-------------|------|---|
| 0140 | 703228 | 4 | CAPSCREW, Hex Washer Head, Taptite, 5/16-18 x 3/4 |
| 0150 | 1758773BMYP | 1 | BRACKET, Idler, RH |
| 0160 | 703409 | 8 | NUT, Hex Flange, 5/16-18 |
| 0170 | 885516AYP | 1 | SUPPORT, Idler Arm |
| 0200 | 885559AYP | 1 | DECK IDLER ASSEMBLY |
| 0210 | 1727935SM | 1 | SPACER, Pivot, 0.330ID 1.76OD |
| 0220 | 703585 | 1 | CAPSCREW, Hex Head, 5/16-18 x 1, G5 |
| 0230 | 704067 | 1 | NUT, Hex Flange, Center Lock, 5/16-18 |
| 0240 | 092697MA | 1 | GRIP |
| 0250 | 885482YP | 3 | PULLEY, Deck Idler |
| 0260 | 703589 | 3 | CAPSCREW, Hex Head, 3/8-16 x 2, G5 |
| 0270 | 703333 | 3 | NUT, Hex Flange, Whiz Lock, 3/8-16 |
| 0280 | 885534YP | 2 | BELT GUIDE |
| 0310 | 703185 | 1 | BOLT, Carriage, 5/16-18 x 3/4 GR5 |
| 0330 | 1919326SM | 1 | WASHER, 5/16 |
| 0340 | 1401105MA | 1 | BELT GUIDE, Long |
| 0360 | 1758762YP | 1 | BELT, Deck |
| 0370 | 1715435SM | 1 | SPRING, Extension |
| 0500 | 885556AYP | 1 | BRACKET, Idler, Fixed |
| 0600 | 704128 | 3 | WASHER, Flat, 3/8 |
| 0650 | 1677135SM | 1 | GUARD, Spring |
| 0750 | 885675YP | 1 | SHIM |

Not for
Reproduction

Footnotes

The above parts group applies to the following Mfg. Nos.:

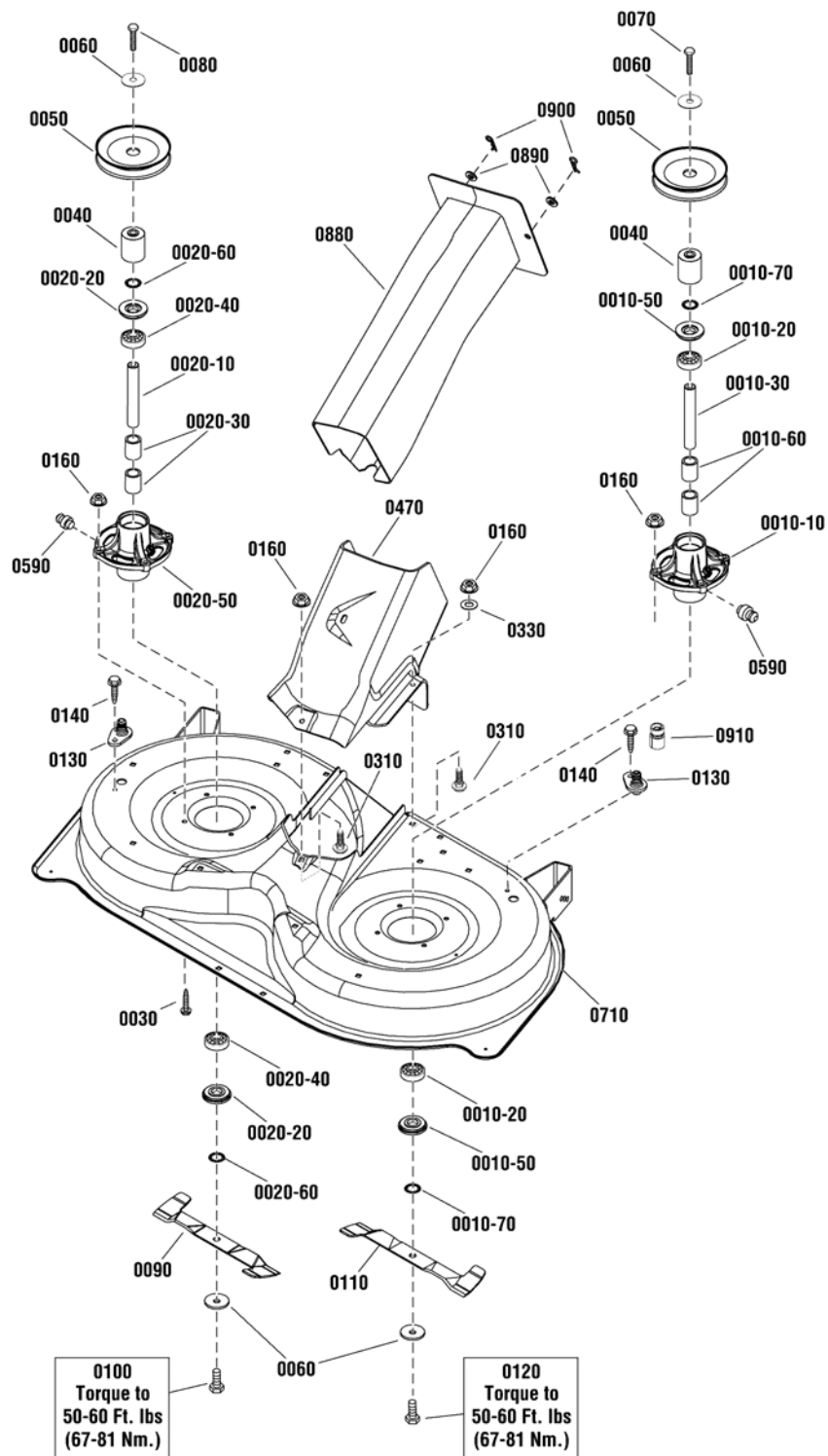
2691263-00 - SRD100

2691264-00 - SRD200

96cm Mower Deck - Housing & Blades Group

NOTE: Unless noted otherwise, use the standard hardware torque specification chart.

2991759a



The above parts group applies to the following Mfg. Nos.:

2691263-00 - SRD100

2691264-00 - SRD200

96cm Mower Deck - Housing & Blades Group

| REF NO | PART NO. | QTY. | DESCRIPTION |
|---------|-------------|------|--|
| 0010-10 | 1735573YP | 2 | HOUSING, Spindle each |
| 0010-20 | 1735399YP | 4 | BEARING, Ball, 20mm each |
| 0010-30 | 1735326YP | 1 | SHAFT, Spindle, LH each |
| 0010-50 | 1735323YP | 4 | SHIELD, Arbor each |
| 0010-60 | 1735328YP | 4 | SPACER, Bearing each |
| 0010-70 | 1960766YP | 4 | RING, Self Locking each |
| 0020-10 | 885420YP | 1 | SHAFT, Spindle, RH (LH Thread) each |
| 0020-20 | 1735323YP | 4 | SHIELD, Arbor each |
| 0020-30 | 1735328YP | 4 | SPACER, Bearing each |
| 0020-40 | 1735399YP | 4 | BEARING, Ball, 20mm each |
| 0020-50 | 1735573YP | 2 | HOUSING, Spindle each |
| 0020-60 | 1960766YP | 4 | RING, Self Locking each |
| 0030 | 1930600SM | 8 | CAPSCREW, Hex Washer Head, Taptite, 5/16-18 x 1-1/2 each |
| 0040 | 1750338YP | 2 | SPACER, Mower Drive each |
| 0050 | 1758750YP | 2 | PULLEY each |
| 0060 | 1656916SM | 4 | WASHER, Spring, 0.475ID x 1-3/4 OD each |
| 0070 | 1926110SM | 1 | CAPSCREW, Hex Head, 7/16-14 x 2-3/4. G5 each |
| 0080 | 703846 | 1 | CAPSCREW, Socket Head, 7/16-14 x 2-3/4, LH each |
| 0090 | 1758511BMYP | 1 | BLADE, RH each |
| 0100 | 703845 | 1 | CAPSCREW, Socket Head, 7/16-14 x 1, LH each |
| 0110 | 1758512BMYP | 1 | BLADE, LH each |
| 0120 | 1920676SM | 1 | CAPSCREW, Hex Head, 7/16-14 x 1, G5 each |
| 0130 | 1756247YP | 2 | ADAPTER, Washout Port each |
| 0140 | 703228 | 2 | CAPSCREW, Hex Washer Head, Taptite, 5/16-18 x 3/4 each |
| 0160 | 703409 | 9 | NUT, Hex Flange, Whiz Lock, 5/16-18 each |
| 0310 | 703185 | 3 | BOLT, Carriage, Short Neck, 5/16-18 x 3/4, G5 each |
| 0330 | 1919326SM | 3 | WASHER, 5/16 each |
| 0470 | 885460YP | 1 | DECK, CENTER CAP each |
| 0590 | 1704314 | 2 | FITTING, Grease each |
| 0710 | 885557AYP | 1 | DECK ASSEMBLY each |
| 0880 | 885461YP | 1 | CHUTE each |
| 0890 | 703853 | 2 | WASHER, 1/2 each |
| 0900 | 703300 | 2 | PIN, Hair each |
| 0910 | 1756246YP | 1 | CONNECTOR, Washout Port |

Footnotes

The above parts group applies to the following Mfg. Nos.:

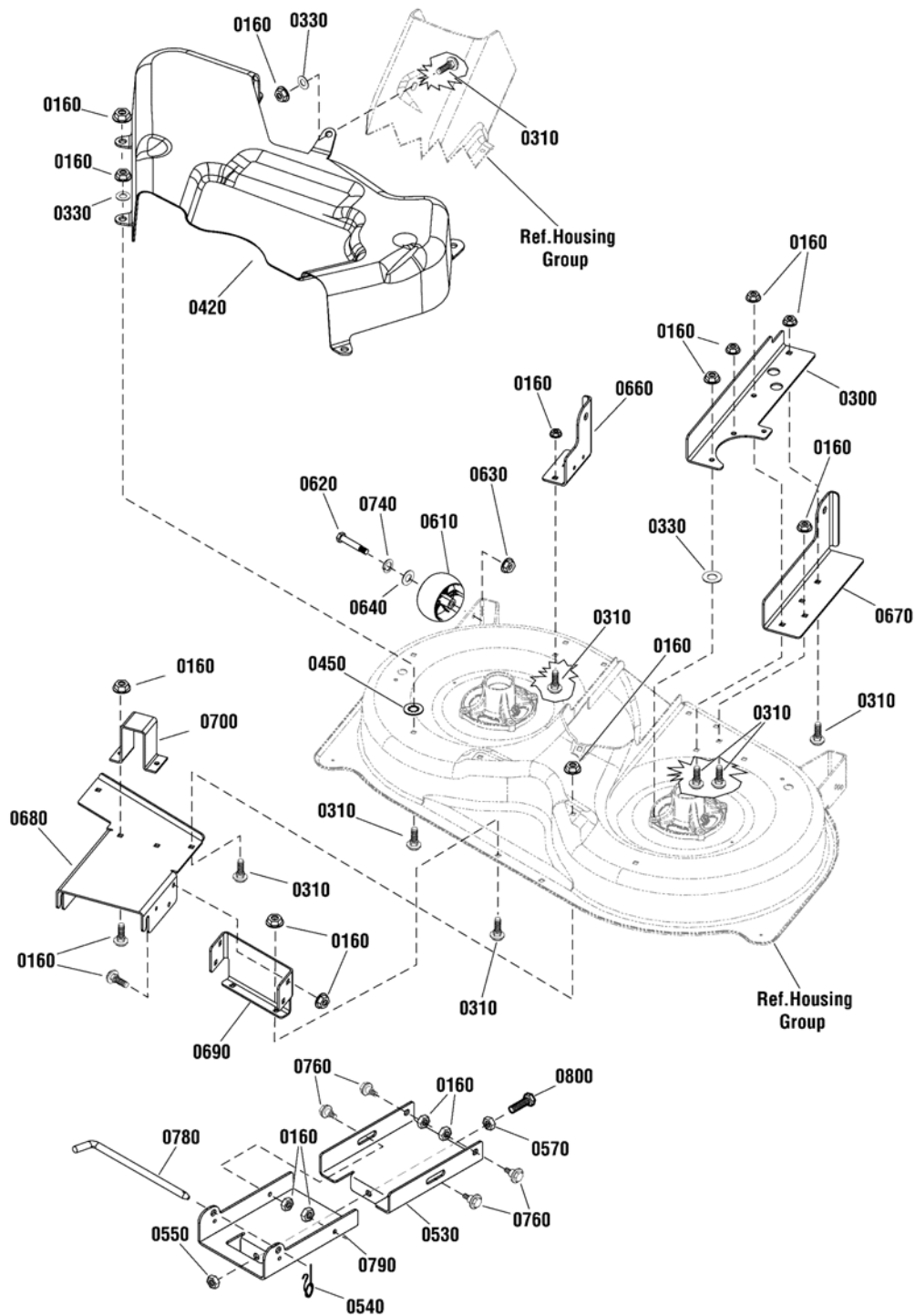
2691263-00 - SRD100

2691264-00 - SRD200

96cm Mower Deck - Support Group

NOTE: Unless noted otherwise,
use the standard hardware torque
specification chart.

2991759c



The above parts group applies to the following Mfg. Nos.:

2691263-00 - SRD100

2691264-00 - SRD200

96cm Mower Deck - Support Group

| REF NO | PART NO. | QTY. | DESCRIPTION |
|--------|-------------|------|--|
| 0160 | 703409 | 24 | NUT, Hex Flange, 5/16-18 |
| 0300 | 1758761BMYP | 1 | BRACKET, Rear Lift, LH |
| 0310 | 703185 | 22 | BOLT, Carriage, Short Square Neck, 5/16-18 x 3/4, G5 |
| 0330 | 1919326SM | 6 | WASHER, 5/16 |
| 0420 | 1759108YP | 1 | COVER, Pulley |
| 0450 | 703297 | 6 | NUT, Push On, 5/16 |
| 0530 | 885734BMYP | 1 | BRACKET, Front Connector |
| 0540 | 703852 | 1 | RETAINER, Pin Spring |
| 0550 | 1960379SM | 1 | NUT, Hex Lock, ESNA LIGHT, 1/2-13 |
| 0570 | 1913744SM | 1 | NUT, Hex Jam, 1/2-13 |
| 0610 | 1714760SM | 2 | WHEEL, Gauge |
| 0620 | 2108765SM | 2 | BOLT, 3/8-16 x 2-3/4 |
| 0630 | 703158 | 2 | NUT, Hex Flange, ESNA, 3/8-16 |
| 0640 | 703853 | 2 | WASHER, 1/2 |
| 0660 | 885462AYP | 1 | BRACKET, Deck, Rear |
| 0670 | 885463AYP | 1 | BRACKET, Rear Lift, LH |
| 0680 | 885738BMYP | 1 | SUPPORT, Deck Front |
| 0690 | 885740BMYP | 1 | BRACKET, Front Support |
| 0700 | 885519AYP | 1 | BRACKET, Front Upstop |
| 0740 | 0020X3MA | 2 | WASHER, Spring, .30" ID |
| 0760 | 1732426SM | 4 | BOLT, Shoulder, 5/16-18 x .13/16, 1/2" Thread Length |
| 0780 | 1731414SM | 1 | ROD, Latch |
| 0790 | 885699BMYP | 1 | BRACKET, Front Hanger |
| 0800 | 885710YP | 1 | BOLT, 1/2 x 3 |

Not for
Reproduction

Footnotes

The above parts group applies to the following Mfg. Nos.:

2691263-00 - SRD100

2691264-00 - SRD200

Not for
Reproduction

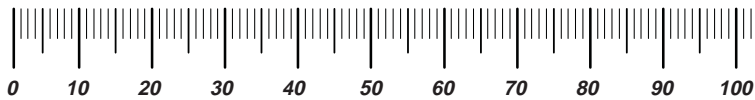
Not for
Reproduction

Not for
Reproduction

Hardware Identification & Torque Specifications

| Torque Specification Chart | | | | | | | | |
|--|-----------|------|-----------|------|------------|------|------------|------|
| FOR STANDARD METRIC MACHINE HARDWARE (Tolerance ± 20%) | | | | | | | | |
| Property Class | 5.6 | | 8.8 | | 10.9 | | 12.9 | |
| | Class 5.6 | | Class 8.8 | | Class 10.9 | | Class 12.9 | |
| Size Of Hardware | in/lbs | Nm. | in/lbs | Nm. | in/lbs | Nm. | in/lbs | Nm. |
| | ft/lbs | | ft/lbs | | ft/lbs | | ft/lbs | |
| M3 | 5.88 | .56 | 13.44 | 1.28 | 19.2 | 1.80 | 22.92 | 2.15 |
| M4 | 13.44 | 1.28 | 30.72 | 2.90 | 43.44 | 4.10 | 52.56 | 4.95 |
| M5 | 26.4 | 2.50 | 60.96 | 5.75 | 5.97 | 8.10 | 7.15 | 9.7 |
| M6 | 44.64 | 4.3 | 7.3 | 9.9 | 10.3 | 14 | 12.1 | 16.5 |
| M7 | 5.2 | 7.1 | 12.1 | 16.5 | 16.9 | 23 | 19.9 | 27 |
| M8 | 7.7 | 10.5 | 17.7 | 24 | 25 | 34 | 29 | 40 |
| M10 | 15 | 21 | 35 | 48 | 50 | 67 | 59 | 81 |
| M12 | 26 | 36 | 61 | 83 | 86.2 | 117 | 103 | 140 |
| M14 | 42 | 58 | 101 | 132 | 136 | 185 | 162 | 220 |
| M16 | 64 | 88 | 147 | 200 | 210 | 285 | 250 | 340 |
| M18 | 89 | 121 | 202 | 275 | 287 | 390 | 346 | 470 |
| M20 | 126 | 171 | 290 | 390 | 405 | 550 | 486 | 660 |
| M22 | 169 | 230 | 390 | 530 | 559 | 745 | 656 | 890 |
| M24 | 217 | 295 | 497 | 375 | 708 | 960 | 840 | 1140 |
| M27 | 320 | 435 | 733 | 995 | 1032 | 1400 | 1239 | 1680 |
| M30 | 435 | 590 | 995 | 1350 | 1401 | 1900 | 1681 | 2280 |
| M33 | 590 | 800 | 1349 | 1830 | 1902 | 2580 | 2278 | 3090 |
| M36 | 759 | 1030 | 1740 | 2360 | 2441 | 3310 | 2935 | 3980 |
| M39 | 988 | 1340 | 2249 | 3050 | 3163 | 4290 | 3798 | 5150 |

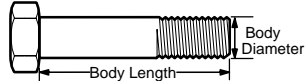
The guides and ruler furnished below are designed to help you select the appropriate hardware.



Nut, M8

Thread Diameter (mm)
Inside Diameter (in)
Threads per inch

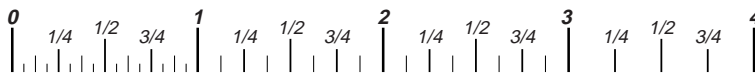
Nut, 1/2-16



Screw, M8 - 1.25 x 25

Thread Diameter (mm)
Body Diameter
Distance between threads (mm)
Threads per inch
Body Length (mm)
Body Length (in)

Screw, 1/2- 16 x 2



Standard Hardware Sizing

When a washer or nut is identified as **1/2"** (M8), this is the *Nominal size*, meaning the *inside diameter* is 1/2 inch (8mm metric thread diameter); if a second number is present it represents the *threads per inch* (distance between threads).

When bolt or capscrew is identified as **1/2 - 16 x 2"** (M8 - 1.25 x 50), this means the *Nominal size*, or body diameter is 1/2 inch (8mm metric thread diameter), the second number, 16, represents the *threads per inch*, (1.25 thread diameter). The final number is the body length of the bolt or screw, 2 inches (50mm).

| Torque Specification Chart | | | | | | |
|---|-------------|-------|-------------|-------|-------------|---------|
| FOR STANDARD MACHINE HARDWARE (Tolerance ± 20%) | | | | | | |
| Hardware Grade | No Marks | | SAE Grade 5 | | SAE Grade 8 | |
| | SAE Grade 2 | | SAE Grade 5 | | SAE Grade 8 | |
| Size Of Hardware | in/lbs | Nm. | in/lbs | Nm. | in/lbs | Nm. |
| | ft/lbs | | ft/lbs | | ft/lbs | |
| 8-32 | 19 | 2.1 | 30 | 3.4 | 41 | 4.6 |
| 8-36 | 20 | 2.3 | 31 | 3.5 | 43 | 4.9 |
| 10-24 | 27 | 3.1 | 43 | 4.9 | 60 | 6.8 |
| 10-32 | 31 | 3.5 | 49 | 5.5 | 68 | 7.7 |
| 1/4-20 | 66 | 7.6 | 8 | 10.9 | 12 | 16.3 |
| 1/4-28 | 76 | 8.6 | 10 | 13.6 | 14 | 19.0 |
| 5/16-18 | 11 | 15.0 | 17 | 23.1 | 25 | 34.0 |
| 5/16-24 | 12 | 16.3 | 19 | 25.8 | 29 | 34.0 |
| 3/8-16 | 20 | 27.2 | 30 | 40.8 | 45 | 61.2 |
| 3/8-24 | 23 | 31.3 | 35 | 47.6 | 50 | 68.0 |
| 7/16-14 | 30 | 40.8 | 50 | 68.0 | 70 | 95.2 |
| 7/16-20 | 35 | 47.6 | 55 | 74.8 | 80 | 108.8 |
| 1/2-13 | 50 | 68.0 | 75 | 102.0 | 110 | 149.6 |
| 1/2-20 | 55 | 74.8 | 90 | 122.4 | 120 | 163.2 |
| 9/16-12 | 65 | 88.4 | 110 | 149.6 | 150 | 204.0 |
| 9/16-18 | 75 | 102.0 | 120 | 163.2 | 170 | 231.2 |
| 5/8-11 | 90 | 122.4 | 150 | 204.0 | 220 | 299.2 |
| 5/8-18 | 100 | 136 | 180 | 244.8 | 240 | 326.4 |
| 3/4-10 | 160 | 217.6 | 260 | 353.6 | 386 | 525.0 |
| 3/4-16 | 180 | 244.8 | 300 | 408.0 | 420 | 571.2 |
| 7/8-9 | 140 | 190.4 | 400 | 544.0 | 600 | 816.0 |
| 7/8-14 | 155 | 210.8 | 440 | 598.4 | 660 | 897.6 |
| 1-8 | 220 | 299.2 | 580 | 788.8 | 900 | 1,244.0 |
| 1-12 | 240 | 326.4 | 640 | 870.4 | 1,000 | 1,360.0 |

NOTES

- These torque values are to be used for all hardware excluding: locknuts, self-tapping screws, thread forming screws, sheet metal screws and socket head setscrews.
- Recommended seating torque values for locknuts:
 - for prevailing torque locknuts - use 65% of grade 5 torques.
 - for flange whizlock nuts and screws - use 135% of grade 5 torques.
- Unless otherwise noted on assembly drawings, all torque values must meet this specification.

Common Hardware Types

Hex Head Capscrew

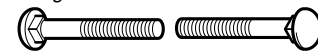


Washer



Lockwasher

Carriage Bolt



Hex Nut

Wrench & Fastener Size Guide

| | | | | |
|----------------------------------|----------------------------------|----------------------------------|--|---------------------------------|
| 1/4" Bolt or Nut Wrench—7/16" | 5/16" Bolt or Nut Wrench—1/2" | 3/8" Bolt or Nut Wrench—9/16" | 7/16" Bolt or Nut Wrench (Bolt)—5/8" Wrench (Nut)—11/16" | 1/2" Bolt or Nut Wrench—3/4" |
| M6 Bolt or Nut Wrench—10mm | M8 Bolt or Nut Wrench—13mm | M10 Bolt or Nut Wrench—17mm | M12 Bolt or Nut Wrench—19mm | M14 Bolt or Nut Wrench—22mm |

Not for
Reproduction

**IT IS THE POLICY OF BRIGGS & STRATTON CORP. TO IMPROVE ITS PRODUCTS
WHENEVER IT IS POSSIBLE AND PRACTICAL TO DO SO. WE RESERVE THE RIGHT TO
MAKE CHANGES OR ADD IMPROVEMENTS AT ANY TIME WITHOUT INCURRING ANY
OBLIGATION TO MAKE SUCH CHANGES ON PRODUCTS.**

Briggs & Stratton Yard Power Products Group

3515 N. 124 Street / PO Box 702
Wauwatosa, WI 53222 USA

www.simplicitymfg.com

© Copyright 2015 by Briggs & Stratton Corporation
Milwaukee, WI, USA. All rights reserved